

TEST SIEVE

**60 to 600 mm Ø**

STAINLESS  
STEEL FRAME



60	75	98	100	150	200	203
250	300	305	315	350	400	450
500	560	600				

## TEST SIEVE

# 60 to 600 mm Ø

<b>Dimensions tamis</b>	<b>Maille filaire</b>	<b>Trous carrés</b>	<b>Trous ronds</b>	<b>Trous allongés</b>	<b>Page</b>
60 mm Ø x 20 mm H	60.1				3
75 mm Ø x 25 mm H	75.1 (1")				6
75 mm Ø x 50 mm H	75.2 (2")				9
75 mm Ø x 75 mm H	75.3 (3")				12
100 mm Ø x 23 mm H	98.1				15
100 mm Ø x 40 mm H	100.1				18
150 mm Ø x 30 mm H	150.1				21
200 mm Ø x 25 mm H	200.6	200.7	200.8		24
200 mm Ø x 50 mm H	200.1	200.2	200.3	200.4	29
200 mm Ø x 50 mm H	200,5	perforage carré électroformé			34
8".Ø x 2".H	203.1	203.2	203.3		35
250 mm Ø x 70 mm H	250.1	250.2	250.3		40
300 mm Ø x 70 mm H	300.1	300.2	300.3		44
12".Ø x 3".H	305.1	305.2	305.3		48
315 mm Ø x 80 mm H	315.1	315.2	315.3		52
350 mm Ø x 60 mm H	350.1	350.2	350.3		56
400 mm Ø x 65 mm H	400.3	400.4	400.5		60
400 mm Ø x 100 mm H	400.1	400.2	400.6		64
450 mm Ø x 100 mm H	450.1	450.2	450.3		68
500 mm Ø x 100 mm H	500.1	500.2	500.3		72
560 mm Ø x 100 mm H	560.1	560.2	560.3		76
600 mm Ø x 100 mm H	600.1	600.2	600.3		80

TEST SIEVE

**60mm Ø**  
**20mm H**

STAINLESS  
STEEL FRAME

**60**



**C I S a**   
SIEVING TECHNOLOGIES



60

# 60mm Ø x 20mm H

STAINLESS STEEL FRAME



Request  
Calibration Certificate  
Service sieve



For small samples and fieldsieving.

Recommended by ISO, ASTM and BS standards.

Individual laser-engraved identification of each sieve to ensure traceability.

Includes certificate of attestation according to 2.1 EN 10204.

Optional calibration certificate with indication of the sieve value.

Frame material: AISI-304.

**Weight:** From 32 grams to 50 grams depending on the mesh opening.

**Recommended sample volume:** Up to 10 cm<sup>3</sup>.

**Range of openings:** Up to 4.00mm.# with metal mesh.



## AVAILABLE CONFIGURATIONS

60.1 Wire mesh sieves according to standards ISO 3310.1 - ASTM E-11-2013

## INCLUDED

- ✓ Individual packing of each sieve with 100% recycled cardboard box, which guarantees transport in perfect conditions.
- ✓ Test certificate according to standard 2.1.EN 10204.

## ACCESSORIES

- Pan (code 0100001).
- Cover (code 0100002).

## OPTIONS

- Calibration certificate according to ASTM E-11, AFNOR NF X-11-504, BS 410 or ISO 3310 standards.





**60**

# 60mm Ø x 20mm H

STAINLESS STEEL FRAME



## 60.1 WIRE MESH SIEVES

ISO 3310.1	ASTM E-11-2013	Code CISA	ISO 3310.1	ASTM E-11-2013	Code CISA	ISO 3310.1	ASTM E-11-2013	Code CISA
20 µ	N° 635	0100601	160 µ		0104801	1,00 mm	N° 18	0109001
25 µ	N° 500	0100801	180 µ	N° 80	0105001	1,12 mm		0109201
32 µ	N° 450	0101001	200 µ		0105201	1,18 mm	N° 16	0109401
36 µ		0101201	212 µ	N° 70	0105401	1,25 mm		0109601
38 µ	N° 400	0101401	224 µ		0105601	1,40 mm	N° 14	0109801
40 µ		0101601	250 µ	N° 60	0105801	1,60 mm		0110001
45 µ	N° 325	0101801	280 µ		0106001	1,70 mm	N° 12	0110201
50 µ		0102001	300 µ	N° 50	0106201	1,80 mm		0110401
53 µ	N° 270	0102201	315 µ		0106401	2,00 mm	N° 10	0110601
56 µ		0102401	355 µ	N° 45	0106601	2,24 mm		0110801
63 µ	N° 230	0102601	400 µ		0106801	2,36 mm	N° 8	0111001
71 µ		0102801	425 µ	N° 40	0107001	2,50 mm		0111201
75 µ	N° 200	0103001	450 µ		0107201	2,80 mm	N° 7	0111401
80 µ		0103201	500 µ	N° 35	0107401	3,15 mm		0111601
90 µ	N° 170	0103401	560 µ		0107601	3,35 mm	N° 6	0111801
100 µ		0103601	600 µ	N° 30	0107801	3,55 mm		0112001
106 µ	N° 140	0103801	630 µ		0108001	4,00 mm	N° 5	0112201
112 µ		0104001	710 µ	N° 25	0108201			
125 µ	N° 120	0104201	800 µ		0108401			
140 µ		0104401	850 µ	N° 20	0108601			
150 µ	N° 100	0104601	900 µ		0108801			

Mesh material AISI-304 stainless steel. On request with supplement made in 316 stainless steel

## ACCESSORIES

Pan and cover  
60 mm.Ø

Rubber gasket  
60 mm.Ø

Cleaning kit

Calibration certificate according to ASTM E-11, AFNOR NF X-11-504, BS 410 or ISO 3310 standards.



NOVETAL SARL

1410, Chemin des Chaberts 83136 Garéoult France

Tel : + 33 (0) 4 94 86 47 09 - Email : [info@novetal.com](mailto:info@novetal.com) - Internet : [www.novetal.com](http://www.novetal.com)

TEST SIEVE

**75mm Ø**  
**25mm H**

STAINLESS  
STEEL FRAME

**75**



**C I S a**   
SIEVING TECHNOLOGIES





75

# 75mm Ø x 25mm H

STAINLESS STEEL FRAME



Request  
Calibration Certificate  
Service sieve



For small samples and fieldsieving.

Recommended by ISO, ASTM and BS standards.

Individual laser-engraved identification of each sieve to ensure traceability.

Includes certificate of attestation according to 2.1 EN 10204.

Optional calibration certificate with indication of the sieve value.

Frame material: AISI-304.

**Weight:** From 55 grams to 210grams depending on the mesh opening.

**Recommended sample volume:** Up to 25 cm<sup>3</sup>.

**Range of openings:** Up to 4.00mm.# with metal mesh.



## AVAILABLE CONFIGURATIONS

75.1 Height 25 mm (1"). Sieves with metal mesh according to ISO 3310.1 - ASTM E-11-2013

## INCLUDED

- ✓ Individual packing of each sieve with 100% recycled cardboard box, which guarantees transport in perfect conditions.
- ✓ Test certificate according to standard 2.1.EN 10204.

## ACCESSORIES

- Pan (code 0200001).
- Cover (code 0200002).

## OPTIONS

- Calibration certificate according to ASTM E-11, AFNOR NF X-11-504, BS 410 or ISO 3310 standards.

75

# 75mm Ø x 25mm H

STAINLESS STEEL FRAME



## 75.1 HEIGHT 25 MM- (1") WIRE MESH SIEVES

ISO 3310.1	ASTM E-11-2013	Code CISA		ISO 3310.1	ASTM E-11-2013	Code CISA		ISO 3310.1	ASTM E-11-2013	Code CISA
20 µ	N° 635	2700601	•	160 µ		2704801	•	1,00 mm	N° 18	2709001
25 µ	N° 500	2700801	•	180 µ	N° 80	2705001	•	1,12 mm		2709201
32 µ	N° 450	2701001	•	200 µ		2705201	•	1,18 mm	N° 16	2709401
36 µ		2701201	•	212 µ	N° 70	2705401	•	1,25 mm		2709601
38 µ	N° 400	2701401	•	224 µ		2705601	•	1,40 mm	N° 14	2709801
40 µ		2701601	•	250 µ	N° 60	2705801	•	1,60 mm		2710001
45 µ	N° 325	2701801	•	280 µ		2706001	•	1,70 mm	N° 12	2710201
50 µ		2702001	•	300 µ	N° 50	2706201	•	1,80 mm		2710401
53 µ	N° 270	2702201	•	315 µ		2706401	•	2,00 mm	N° 10	2710601
56 µ		2702401	•	355 µ	N° 45	2706601	•	2,24 mm		2710801
63 µ	N° 230	2702601	•	400 µ		2706801	•	2,36 mm	N° 8	2711001
71 µ		2702801	•	425 µ	N° 40	2707001	•	2,50 mm		2711201
75 µ	N° 200	2703001	•	450 µ		2707201	•	2,80 mm	N° 7	2711401
80 µ		2703201	•	500 µ	N° 35	2707401	•	3,15 mm		2711601
90 µ	N° 170	2703401	•	560 µ		2707601	•	3,35 mm	N° 6	2711801
100 µ		2703601	•	600 µ	N° 30	2707801	•	3,55 mm		2712001
106 µ	N° 140	2703801	•	630 µ		2708001	•	4,00 mm	N° 5	2712201
112 µ		2704001	•	710 µ	N° 25	2708201	•			
125 µ	N° 120	2704201	•	800 µ		2708401	•			
140 µ		2704401	•	850 µ	N° 20	2708601	•			
150 µ	N° 100	2704601	•	900 µ		2708801	•			

Mesh material AISI-304 stainless steel. On request with supplement made in 316 stainless steel

## ACCESSORIES

Pan and cover  
75 mm..Ø

Rubber gasket  
75 mm..Ø

Cleaning kit

Calibration certificate according to  
ASTM E-11, AFNOR NF X-11-504, BS  
410 or ISO 3310 standards.



NOVETAL SARL

1410, Chemin des Chaberts 83136 Garéoult France

Tel : + 33 (0) 4 94 86 47 09 - Email : [info@novetal.com](mailto:info@novetal.com) - Internet : [www.novetal.com](http://www.novetal.com)



TEST SIEVE

**75mm Ø**  
**50mm H**

STAINLESS  
STEEL FRAME

**75**



**C I S a**   
SIEVING TECHNOLOGIES



75

# 75mm Ø x 50mm H

## STAINLESS STEEL FRAME



Request  
Calibration Certificate  
Service sieve



PF For small samples and fieldsieving.

Recommended by ISO, ASTM and BS standards.

Individual laser-engraved identification of each sieve to ensure traceability.

Includes **certificate of attestation** according to 2.1 EN 10204.

Optional **calibration certificate** with indication of the sieve value.

Frame material: AISI-304.

**Weight:** From 55 grams to 210grams depending on the mesh opening.

**Recommended sample volume:** Up to 25 cm<sup>3</sup>.

**Range of openings:** Up to 4.00mm.# with metal mesh.



## AVAILABLE CONFIGURATIONS

75.2 Height 50 mm (2"). Sieves with metal mesh according to ISO 3310.1 - ASTM E-11-2013

## INCLUDED

- ✓ Individual packing of each sieve with 100% recycled cardboard box, **which guarantees transport in perfect conditions.**
- ✓ Test certificate according to standard 2.1.EN 10204.

## ACCESSORIES

- Pan (code 0200001).
- FondoCover (code 0200002).

## OPTIONS

- Calibration certificate according to ASTM E-11, AFNOR NF X-11-504, BS 410 or ISO 3310 standards.

75

# 75mm Ø x 50mm H

STAINLESS STEEL FRAME



## 75.2 HEIGHT 50 MM - (2") WIRE MESH SIEVES

ISO 3310.1	ASTM E-11-2013	Code CISA	ISO 3310.1	ASTM E-11-2013	Code CISA	ISO 3310.1	ASTM E-11-2013	Code CISA
20 µ	N° 635	0200601	160 µ		0204801	1,00 mm	N° 18	0209001
25 µ	N° 500	0200801	180 µ	N° 80	0205001	1,12 mm		0209201
32 µ	N° 450	0201001	200 µ		0205201	1,18 mm	N° 16	0209401
36 µ		0201201	212 µ	N° 70	0205401	1,25 mm		0209601
38 µ	N° 400	0201401	224 µ		0205601	1,40 mm	N° 14	0209801
40 µ		0201601	250 µ	N° 60	0205801	1,60 mm		0210001
45 µ	N° 325	0201801	280 µ		0206001	1,70 mm	N° 12	0210201
50 µ		0202001	300 µ	N° 50	0206201	1,80 mm		0210401
53 µ	N° 270	0202201	315 µ		0206401	2,00 mm	N° 10	0210601
56 µ		0202401	355 µ	N° 45	0206601	2,24 mm		0210801
63 µ	N° 230	0202601	400 µ		0206801	2,36 mm	N° 8	0211001
71 µ		0202801	425 µ	N° 40	0207001	2,50 mm		0211201
75 µ	N° 200	0203001	450 µ		0207201	2,80 mm	N° 7	0211401
80 µ		0203201	500 µ	N° 35	0207401	3,15 mm		0211601
90 µ	N° 170	0203401	560 µ		0207601	3,35 mm	N° 6	0211801
100 µ		0203601	600 µ	N° 30	0207801	3,55 mm		0212001
106 µ	N° 140	0203801	630 µ		0208001	4,00 mm	N° 5	0212201
112 µ		0204001	710 µ	N° 25	0208201			
125 µ	N° 120	0204201	800 µ		0208401			
140 µ		0204401	850 µ	N° 20	0208601			
150 µ	N° 100	0204601	900 µ		0208801			

Mesh material AISI-304 stainless steel. On request with supplement made in 316 stainless steel

## ACCESSORIES

Pan and cover  
75 mm. Ø

Rubber gasket  
75 mm. Ø

Cleaning kit

Calibration certificate according to  
ASTM E-11, AFNOR NF X-11-504, BS  
410 or ISO 3310 standards.



NOVETAL SARL

1410, Chemin des Chaberts 83136 Garéoult France

Tel : + 33 (0) 4 94 86 47 09 - Email : [info@novetal.com](mailto:info@novetal.com) - Internet : [www.novetal.com](http://www.novetal.com)



TEST SIEVE

**75mm Ø**  
**75mm H**

STAINLESS  
STEEL FRAME

**75**



**C I S a**   
SIEVING TECHNOLOGIES



75

# 75mm Ø x 75mm H

STAINLESS STEEL FRAME



Request  
Calibration Certificate  
Service sieve



For small samples and fieldsieving.

Recommended by ISO, ASTM and BS standards.

Individual laser-engraved identification of each sieve to ensure traceability.

Includes certificate of attestation according to 2.1 EN 10204.

Optional calibration certificate with indication of the sieve value.

Frame material: AISI-304.

**Weight:** From 55 grams to 210grams depending on the mesh opening.

**Recommended sample volume:** Up to 25 cm<sup>3</sup>.

**Range of openings:** Up to 4.00mm.# with metal mesh.



## AVAILABLE CONFIGURATIONS

75.3 Height 75 mm (3"). Sieves with metal mesh according to ISO 3310.1 - ASTM E-11-2013

## INCLUDED

- ✓ Individual packing of each sieve with 100% recycled cardboard box, which guarantees transport in perfect conditions.
- ✓ Test certificate according to standard 2.1.EN 10204.

## ACCESSORIES

- Pan (code 0200001).
- Cover (code 0200002).

## OPTIONS

- Calibration certificate according to ASTM E-11, AFNOR NF X-11-504, BS 410 or ISO 3310 standards.

75

# 75mm Ø x 75mm H

STAINLESS STEEL FRAME



## 75.3 HEIGHT 75 MM- (3") WIRE MESH SIEVES

ISO 3310.1	ASTM E-11-2013	Code CISA	ISO 3310.1	ASTM E-11-2013	Code CISA	ISO 3310.1	ASTM E-11-2013	Codeo CISA
20 µ	N° 635	2900601	160 µ		2904801	1,00 mm	N° 18	2909001
25 µ	N° 500	2900801	180 µ	N° 80	2905001	1,12 mm		2909201
32 µ	N° 450	2901001	200 µ		2905201	1,18 mm	N° 16	2909401
36 µ		2901201	212 µ	N° 70	2905401	1,25 mm		2909601
38 µ	N° 400	2901401	224 µ		2905601	1,40 mm	N° 14	2909801
40 µ		2901601	250 µ	N° 60	2905801	1,60 mm		2910001
45 µ	N° 325	2901801	280 µ		2906001	1,70 mm	N° 12	2910201
50 µ		2902001	300 µ	N° 50	2906201	1,80 mm		2910401
53 µ	N° 270	2902201	315 µ		2906401	2,00 mm	N° 10	2910601
56 µ		2902401	355 µ	N° 45	2906601	2,24 mm		2910801
63 µ	N° 230	2902601	400 µ		2906801	2,36 mm	N° 8	2911001
71 µ		2902801	425 µ	N° 40	2907001	2,50 mm		2911201
75 µ	N° 200	2903001	450 µ		2907201	2,80 mm	N° 7	2911401
80 µ		2903201	500 µ	N° 35	2907401	3,15 mm		2911601
90 µ	N° 170	2903401	560 µ		2907601	3,35 mm	N° 6	2911801
100 µ		2903601	600 µ	N° 30	2907801	3,55 mm		2912001
106 µ	N° 140	2903801	630 µ		2908001	4,00 mm	N° 5	2912201
112 µ		2904001	710 µ	N° 25	2908201			
125 µ	N° 120	2904201	800 µ		2908401			
140 µ		2904401	850 µ	N° 20	2908601			
150 µ	N° 100	2904601	900 µ		2908801			

Mesh material AISI-304 stainless steel. On request with supplement made in 316 stainless steel

## ACCESSORIES

Pan and cover  
75 mm. Ø

Rubber gasket  
75 mm. Ø

Cleaning kit

Calibration certificate according to  
ASTM E-11, AFNOR NF X-11-504, BS  
410 or ISO 3310 standards.





TEST SIEVE

**100mm Ø**  
**23mm H**

STAINLESS  
STEEL FRAME

98



**C I S a**   
SIEVING TECHNOLOGIES



98

# 100mm Ø x 23mm H

## STAINLESS STEEL FRAME



Request  
Calibration Certificate  
Service sieve



For small sample quantities.

Individual laser-engraved identification of each sieve to ensure traceability.

Includes certificate of attestation according to 2.1 EN 10204.

Optional calibration certificate with indication of the sieve value.

Frame material: AISI-304.

**Weight:** From 70 grams to 140 grams depending on the mesh opening.

**Recommended sample volume:** Up to 25 cm<sup>3</sup>.

**Range of openings:** Up to 4.00mm.# with metal mesh.

### REMARK



The 100mm Ø x 40mm sieves. H sieves do not fit 100mm Ø x 23mm. H



### AVAILABLE CONFIGURATIONS

98.1 Sieves with metal mesh according to ISO 3310.1 - ASTM E-11-2013

### INCLUDED

-  Individual packing of each sieve with 100% recycled cardboard box, which guarantees transport in perfect conditions.
-  Test certificate according to standard 2.1.EN 10204.

### ACCESSORIES

- Pan (code 0300001)
- .Cover (code 0300002).

### OPTIONS

- Calibration certificate according to ASTM E-11, AFNOR NF X-11-504, BS 410 or ISO 3310 standards.

98

# 100mm Ø x 23mm H

STAINLESS STEEL FRAME



## 98.1 WIRE MESH SIEVES

ISO 3310.1	ASTM E-11-2013	Code CISA	ISO 3310.1	ASTM E-11-2013	Code CISA	ISO 3310.1	ASTM E-11-2013	Code CISA
20 µ	N° 635	0300601	160 µ		0304801	1,00 mm	N° 18	0309001
25 µ	N° 500	0300801	180 µ	N° 80	0305001	1,12 mm		0309201
32 µ	N° 450	0301001	200 µ		0305201	1,18 mm	N° 16	0309401
36 µ		0301201	212 µ	N° 70	0305401	1,25 mm		0309601
38 µ	N° 400	0301401	224 µ		0305601	1,40 mm	N° 14	0309801
40 µ		0301601	250 µ	N° 60	0305801	1,60 mm		0310001
45 µ	N° 325	0301801	280 µ		0306001	1,70 mm	N° 12	0310201
50 µ		0302001	300 µ	N° 50	0306201	1,80 mm		0310401
53 µ	N° 270	0302201	315 µ		0306401	2,00 mm	N° 10	0310601
56 µ		0302401	355 µ	N° 45	0306601	2,24 mm		0310801
63 µ	N° 230	0302601	400 µ		0306801	2,36 mm	N° 8	0311001
71 µ		0302801	425 µ	N° 40	0307001	2,50 mm		0311201
75 µ	N° 200	0303001	450 µ		0307201	2,80 mm	N° 7	0311401
80 µ		0303201	500 µ	N° 35	0307401	3,15 mm		0311601
90 µ	N° 170	0303401	560 µ		0307601	3,35 mm	N° 6	0311801
100 µ		0303601	600 µ	N° 30	0307801	3,55 mm		0312001
106 µ	N° 140	0303801	630 µ		0308001	4,00 mm	N° 5	0312201
112 µ		0304001	710 µ	N° 25	0308201			
125 µ	N° 120	0304201	800 µ		0308401			
140 µ		0304401	850 µ	N° 20	0308601			
150 µ	N° 100	0304601	900 µ		0308801			



Mesh material AISI-304 stainless steel. On request with supplement made in 316 stainless steel

## ACCESSORIES

Pan and cover  
100 mm. Ø x 23 mm. H

Rubber gasket  
100 mm. Ø x 23 mm. H

Cleaning kit

Calibration certificate according to  
ASTM E-11, AFNOR NF X-11-504, BS  
410 or ISO 3310 standards.





TEST SIEVE

**100mm Ø**  
**40mm H**

STAINLESS  
STEEL FRAME

**100**



**C I S a**   
SIEVING TECHNOLOGIES



100

# 100mm Ø x 40mm H

STAINLESS STEEL FRAME



Request  
Calibration Certificate  
Service sieve



For small sample quantities.

Recommended by ISO, ASTM and BS standards.

Individual laser-engraved identification of each sieve to ensure traceability.

Includes certificate of attestation according to 2.1 EN 10204.

Optional calibration certificate with indication of the sieve value.

Frame material: AISI-304.

**Weight:** From 70 grams to 140 grams depending on the mesh opening.

**Recommended sample volume:** Up to 25 cm<sup>3</sup>.



**Range of openings:** Up to 4.00mm.# with metal mesh.



## AVAILABLE CONFIGURATIONS

100.1 Sieves with metal mesh according to ISO 3310.1 - ASTM E-11-2013

## INCLUDED

-  Individual packing of each sieve with 100% recycled cardboard box, which guarantees transport in perfect conditions.
-  Test certificate according to standard 2.1.EN 10204.

## ACCESSORIES

- Pan (code 0400001)
- Cover (code 0400002)

## OPTIONS

- Calibration certificate according to ASTM E-11, AFNOR NF X-11-504, BS 410 or ISO 3310 standards.

## REMARK

The 100mm Ø x 40mm sieves. H sieves do not fit 100mm Ø x 23mm. H



100

# 100mm Ø x 40mm H

STAINLESS STEEL FRAME



## 100.1 WIRE MESH SIEVES

ISO 3310.1	ASTM E-11-2013	Code CISA	ISO 3310.1	ASTM E-11-2013	Code CISA	ISO 3310.1	ASTM E-11-2013	Code CISA
20 µ	N° 635	0400601	160 µ		0404801	1,00 mm	N° 18	0409001
25 µ	N° 500	0400801	180 µ	N° 80	0405001	1,12 mm		0409201
32 µ	N° 450	0401001	200 µ		0405201	1,18 mm	N° 16	0409401
36 µ		0401201	212 µ	N° 70	0405401	1,25 mm		0409601
38 µ	N° 400	0401401	224 µ		0405601	1,40 mm	N° 14	0409801
40 µ		0401601	250 µ	N° 60	0405801	1,60 mm		0410001
45 µ	N° 325	0401801	280 µ		0406001	1,70 mm	N° 12	0410201
50 µ		0402001	300 µ	N° 50	0406201	1,80 mm		0410401
53 µ	N° 270	0402201	315 µ		0406401	2,00 mm	N° 10	0410601
56 µ		0402401	355 µ	N° 45	0406601	2,24 mm		0410801
63 µ	N° 230	0402601	400 µ		0406801	2,36 mm	N° 8	0411001
71 µ		0402801	425 µ	N° 40	0407001	2,50 mm		0411201
75 µ	N° 200	0403001	450 µ		0407201	2,80 mm	N° 7	0411401
80 µ		0403201	500 µ	N° 35	0407401	3,15 mm		0411601
90 µ	N° 170	0403401	560 µ		0407601	3,35 mm	N° 6	0411801
100 µ		0403601	600 µ	N° 30	0407801	3,55 mm		0412001
106 µ	N° 140	0403801	630 µ		0408001	4,00 mm	N° 5	0412201
112 µ		0404001	710 µ	N° 25	0408201			
125 µ	N° 120	0404201	800 µ		0408401			
140 µ		0404401	850 µ	N° 20	0408601			
150 µ	N° 100	0404601	900 µ		0408801			



Mesh material AISI-304 stainless steel. On request with supplement made in 316 stainless steel

## ACCESSORIES

Pan and cover  
100 mm. Ø x 40 mm. H

Rubber gasket  
100 mm. Ø x 40 mm. H

Cleaning kit

Calibration certificate according to ASTM E-11, AFNOR NF X-11-504, BS 410 or ISO 3310 standards.





TEST SIEVE

**150mm Ø**  
**30mm H**

STAINLESS  
STEEL FRAME

**150**



**C I S a**   
CEDACERIA INDUSTRIAL



150

# 150mm Ø x 30mm H

STAINLESS STEEL FRAME



Request  
Calibration Certificate  
Service sieve



Individual laser-engraved identification of each sieve to ensure traceability.

Includes certificate of attestation according to 2.1 EN 10204.

Optional calibration certificate with indication of the sieve value.

Optional metal identification labels..

Frame material: AISI-304.

**Weight:** From 165 grams to 200 grams depending on the mesh opening.

**Recommended sample volume depending on the opening:**

Opening	Volume	Opening	Volume	Opening	Volume
38 µ	18 cm <sup>3</sup>	125 µ	38 cm <sup>3</sup>	2.00 mm.	150 cm <sup>3</sup>
45 µ	22 cm <sup>3</sup>	250 µ	52 cm <sup>3</sup>	4.00 mm.	260 cm <sup>3</sup>
63 µ	26 cm <sup>3</sup>	500 µ	75 cm <sup>3</sup>	8.00 mm.	300 cm <sup>3</sup>
90 µ	30 cm <sup>3</sup>	1.00mm	100 cm <sup>3</sup>	12.50 mm	300 cm <sup>3</sup>

**Range of openings:** Up to 12.50mm.# with metal mesh.



## AVAILABLE CONFIGURATIONS

150.1 Sieves with metal mesh according to ISO 3310.1 - ASTM E-11-2013

## INCLUDED

- ✓ Individual packing of each sieve with 100% recycled cardboard box, which guarantees transport in perfect conditions.
- ✓ Test certificate according to standard 2.1.EN 10204.

## ACCESSORIES

- Pan 150mm.Ø (code 0500001).
- Pan 150mm.Ø with diffuser (code 0500010).
- Cover 150mm.Ø (code 0500002).
- Cover 150mm.Ø with evacuator (code 0500011).
- Rubber gasket 150mm.Ø (code J150).

## OPTIONS

- Calibration certificate with uncertainty value.
- Useful height of 50 mm.



150

# 150mm Ø x 30mm H

STAINLESS STEEL FRAME



## 150.1 WIRE MESH SIEVES

ISO 3310.1	ASTM E-11-2013	Code CISA	ISO 3310.1	ASTM E-11-2013	Code CISA	ISO 3310.1	ASTM E-11-2013	Code CISA
20 µ	N° 635	0500601	160 µ		0504801	1,00 mm	N° 18	0509001
25 µ	N° 500	0500801	180 µ	N° 80	0505001	1,12 mm		0509201
32 µ	N° 450	0501001	200 µ		0505201	1,18 mm	N° 16	0509401
36 µ		0501201	212 µ	N° 70	0505401	1,25 mm		0509601
38 µ	N° 400	0501401	224 µ		0505601	1,40 mm	N° 14	0509801
40 µ		0501601	250 µ	N° 60	0505801	1,60 mm		0510001
45 µ	N° 325	0501801	280 µ		0506001	1,70 mm	N° 12	0510201
50 µ		0502001	300 µ	N° 50	0506201	1,80 mm		0510401
53 µ	N° 270	0502201	315 µ		0506401	2,00 mm	N° 10	0510601
56 µ		0502401	355 µ	N° 45	0506601	2,24 mm		0510801
63 µ	N° 230	0502601	400 µ		0506801	2,36 mm	N° 8	0511001
71 µ		0502801	425 µ	N° 40	0507001	2,50 mm		0511201
75 µ	N° 200	0503001	450 µ		0507201	2,80 mm	N° 7	0511401
80 µ		0503201	500 µ	N° 35	0507401	3,15 mm		0511601
90 µ	N° 170	0503401	560 µ		0507601	3,35 mm	N° 6	0511801
100 µ		0503601	600 µ	N° 30	0507801	3,55 mm		0512001
106 µ	N° 140	0503801	630 µ		0508001	4,00 mm	N° 5	0512201
112 µ		0504001	710 µ	N° 25	0508201	4,50 mm		0512401
125 µ	N° 120	0504201	800 µ		0508401	4,75 mm	N° 4	0512601
140 µ		0504401	850 µ	N° 20	0508601	5,00 mm		0512801
150 µ	N° 100	0504601	900 µ		0508801	5,60 mm	N° 3½	0513001
						6,30 mm	¼ in.	0513201
						6,70 mm	0.265 in.	0513401
						7,10 mm		0513601
						8,00 mm	5/16 in.	0513801
						9,00 mm		0514001
						9,50 mm	3/8 in.	0514201
						10,00 mm		0514401
						11,20 mm	7/16 in.	0514601
						12,50 mm	½ in.	0514801

Mesh material AISI-304 stainless steel. On request with supplement made in 316 stainless steel

## ACCESSORIES

Pan and cover  
8".Ø x 2".H

Wet sieving  
pan and cover 8".Ø

Cleaning kit

Certificado de calibración de calibración con indicación de la incertidumbre.



NOVETAL SARL

1410, Chemin des Chaberts 83136 Garéoult France

Tel : + 33 (0) 4 94 86 47 09 - Email : info@novetal.com - Internet : www.novetal.com



TEST SIEVE

**200mm Ø**  
**25mm H**

STAINLESS  
STEEL FRAME

**200**



**C I S a**   
SIEVING TECHNOLOGIES





200

# 200mm Ø x 25mm H

STAINLESS STEEL FRAME



Request  
Calibration Certificate  
Service sieve



The sieve recommended by ISO, AFNOR, ASTM, BS, DIN, UNE standards.

Suitable for wet sieving.

Each sieve is laser marked with a serial number to ensure traceability.

Delivered with a Certificate of Compliance according to 2.1 EN 10204.

Frame material: AISI-304.

**Weight:** From 180 grams to 420 grams depending on the mesh opening.

**Recommended sample volumes depending on the opening:**

Opening	Volume	Opening	Volume	Opening	Volume
38 µ	12 cm <sup>3</sup>	125 µ	25 cm <sup>3</sup>	2.00 mm.	100 cm <sup>3</sup>
45 µ	15 cm <sup>3</sup>	250 µ	35 cm <sup>3</sup>	4.00 mm.	175 cm <sup>3</sup>
63 µ	16 cm <sup>3</sup>	500 µ	50 cm <sup>3</sup>	8.00 mm.	250 cm <sup>3</sup>
90 µ	20 cm <sup>3</sup>	1.00 mm	70 cm <sup>3</sup>	16.00 mm	500 cm <sup>3</sup>




## OPTIONS


6. Wire mesh screens, standards ISO 3310.1 - ASTM E-11-2013

7. Sieves with perforated plate, square holes. Standards ISO 3310.2 - ASTM E-323-2011

8. Sieves with perforated plate, round holes. Standards ISO 3310.2 - ASTM E-323-2011

## INCLUDES

 Individual packing of each sieve with 100% recycled cardboard box, which guarantees transport in perfect conditions.

 Test certificate according to standard 2.1. EN 10204.

## ACCESSORIES

- Cover 200mm.Ø (code 0700001).
- Pan 200mm.Ø x 25mm.H (code 0700002).
- O ring 200mm.Ø (code J200).

## OPTIONS

- Calibration certificate according to ISO 3310, ASTM E-11, AFNOR NF X-11-504 and/or BS 410
- AISI-316 stainless steel frames
- Support meshes in openings < 100µ

## ATTENTION

**200 mm sieves are not compatible with 8" sieves (203 mm Ø)**

200

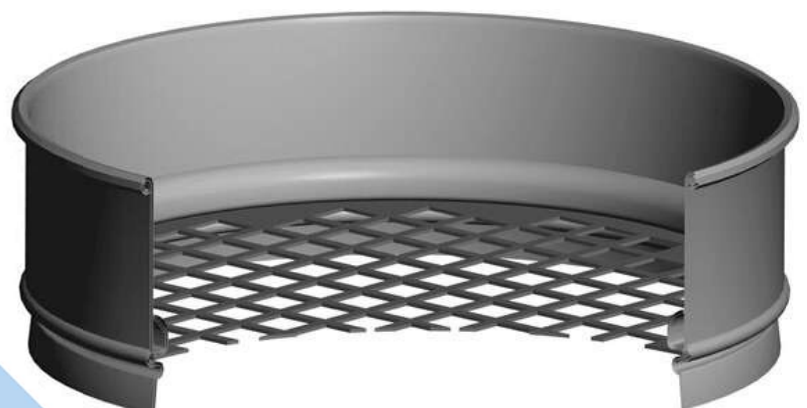
# 200mm Ø x 25mm H

STAINLESS STEEL FRAME



## 200.6 WIRE MESH SIEVES

ISO 3310.1	ASTM E-11-2013	Code CISA	ISO 3310.1	ASTM E-11-2013	Code CISA	ISO 3310.1	ASTM E-11-2013	Code CISA	ISO 3310.1	ASTM E-11-2013	Code CISA
20 µ	N° 635	0700601	160 µ		0704801	1,00 mm	N° 18	0709001	11.20 mm	7/16 in.	0714601
25 µ	N° 500	0700801	180 µ	N° 80	0705001	1,12 mm		0709201	12.50 mm	½ in.	0714801
32 µ	N° 450	0701001	200 µ		0705201	1,18 mm	N° 16	0709401	13.20 mm	0.530 in.	0715001
36 µ		0701201	212 µ	N° 70	0705401	1,25 mm		0709601	14.00 mm		0715201
38 µ	N° 400	0701401	224 µ		0705601	1,40 mm	N° 14	0709801	16.00 mm	5/8 in.	0715401
40 µ		0701601	250 µ	N° 60	0705801	1,60 mm		0710001	18.00 mm		0715601
45 µ	N° 325	0701801	280 µ		0706001	1,70 mm	N° 12	0710201	19.00 mm	3/4 in.	0715801
50 µ		0702001	300 µ	N° 50	0706201	1,80 mm		0710401	20.00 mm		0716001
53 µ	N° 270	0702201	315 µ		0706401	2,00 mm	N° 10	0710601	22.40 mm	7/8 in.	0716201
56 µ		0702401	355 µ	N° 45	0706601	2,24 mm		0710801	25.00 mm	1.00 in.	0716401
63 µ	N° 230	0702601	400 µ		0706801	2,36 mm	N° 8	0711001	26.50 mm	1.06 in.	0716601
71 µ		0702801	425 µ	N° 40	0707001	2,50 mm		0711201	28.00 mm		0716801
75 µ	N° 200	0703001	450 µ		0707201	2,80 mm	N° 7	0711401	31.50 mm	1 1/4 in.	0717001
80 µ		0703201	500 µ	N° 35	0707401	3,15 mm		0711601	35.50 mm		0717201
90 µ	N° 170	0703401	560 µ		0707601	3,35 mm	N° 6	0711801	37.50 mm	1 1/2 in.	0717401
100 µ		0703601	600 µ	N° 30	0707801	3,55 mm		0712001	40.00 mm		0717601
106 µ	N° 140	0703801	630 µ		0708001	4,00 mm	N° 5	0712201	45,00 mm	1 3/4 in.	0717801
112 µ		0704001	710 µ	N° 25	0708201	4,50 mm		0712401	50.00 mm	2.00 in.	0718001
125 µ	N° 120	0704201	800 µ		0708401	4,75 mm	N° 4	0712601	53.00 mm	2.12 in.	0718201
140 µ		0704401	850 µ	N° 20	0708601	5.00 mm		0712801	56.00 mm		0718401
150 µ	N° 100	0704601	900 µ		0708801	5.60 mm	N° 3½	0713001	63.00 mm	2 1/2 in.	0718601
						6.30 mm	¼ in.	0713201	71.00 mm		0718801
						6.70 mm	0.265 in.	0713401	75.00 mm	3.00 in.	0719001
						7.10 mm		0713601	80.00 mm		0719201
						8.00 mm	5/16 in.	0713801	90.00 mm	3 1/2 in.	0719401
						9.00 mm		0714001	100.00 mm	4.00 in.	0719601
						9.50 mm	3/8 in.	0714201	106.00 mm	4.24 in.	0719801
						10.00 mm		0714401	112.00 mm		0720001
									125.00 mm	5.00 in.	0720201





200

# 200mm Ø x 25mm H

STAINLESS STEEL FRAME



## 200.7 SQUARE HOLES

### Square hole

The sieves with perforated plates included in this list strictly comply with the quality criteria required by ASTM E-323 and ISO 3310.2, as well as with regard to openings and distances between centers and thicknesses.

To avoid partial perforations with possible error in the screening result, the plates are not perforated in the area in contact with the frame.

The standard EN 933-2 recommends the use of sieves with square perforated plates (according to ISO 3310.2), when the opening is 4 mm or more.

ISO 3310.2	ASTM E-323-2011	Code CISA	ISO 3310.2	ASTM E-323-2011	Code CISA
4,00 mm	5/32 in.	0712261	22.40 mm	7/8 in.	0716261
4.50 mm		0712461	25.00 mm	1.00 in.	0716461
4.75 mm	3/16 in.	0712661	26.50 mm	1 1/18 in.	0716661
5.00 mm		0712861	28.00 mm		0716861
5.60 mm	7/32 in.	0713061	31.50 mm	1 1/4 in.	0717061
6.30 mm	¼ in.	0713261	35.50 mm		0717261
6.70 mm	17/64 in.	0713461	37.50 mm	1 1/2 in.	0717461
7.10 mm		0713661	40.00 mm		0717661
8.00 mm	5/16 in.	0713861	45,00 mm	13/4 in.	0717861
9.00 mm		0714061	50.00 mm	2.00 in.	0718061
9.50 mm	3/8 in.	0714261	53.00 mm	2 1/8 in.	0718261
10.00 mm		0714461	56.00 mm		0718461
11.20 mm	7/16 in.	0714661	63.00 mm	2 1/2 in.	0718661
12.50 mm	½ in.	0714861	71.00 mm		0718861
13.20 mm	0.530 in.	0715061	75.00 mm	3.00 in.	0719061
14.00 mm		0715261	80.00 mm		0719261
16.00 mm	5/8 in.	0715461	90.00 mm	3 1/2 in.	0719461
18.00 mm		0715661	100.00 mm	4.00 in.	0719661
19.00 mm	3/4 in.	0715861	106.00 mm	4.24 in.	0719861
20.00 mm		0716061	112.00 mm		0720061
			125.00 mm	5.00 in.	0720261

### Material of the perforated plates

Stainless steel AISI-304

**200**

# 200mm Ø x 25mm H

STAINLESS STEEL FRAME



## 200.8 ROUND HOLES

### Round hole drilling



**Material of the perforated plates**  
Stainless steel AISI-304

ISO 3310.2	Código CISA	ISO 3310.2	Código CISA
0.50 mm.Ø	0707441	11,20 mm.Ø	0714641
1.00 mm.Ø	0709041	12,50 mm.Ø	0714841
1.80 mm.Ø	0710441	13,20 mm.Ø	0715041
2.00 mm.Ø	0710641	14,00 mm.Ø	0715241
2.50 mm.Ø	0711241	16,00 mm.Ø	0715441
3.55 mm.Ø	0712041	18,00 mm.Ø	0715641
4.00 mm.Ø	0712241	19,00 mm.Ø	0715841
4.50 mm.Ø	0712441	20,00 mm.Ø	0716041
4.75 mm.Ø	0712641	22,40 mm.Ø	0716241
5.00 mm.Ø	0712841	25,00 mm.Ø	0716441
5.60 mm.Ø	0713041	26,50 mm.Ø	0716641
6.30 mm.Ø	0713241	28,00 mm.Ø	0716841
6.70 mm.Ø	0713441	31,50 mm.Ø	0717041
7.10 mm.Ø	0713641	35,50 mm.Ø	0717241
8.00 mm.Ø	0713841	37,50 mm.Ø	0717441
9.00 mm.Ø	0714041	40,00 mm.Ø	0717641
9.50 mm.Ø	0714241	45,00 mm.Ø	0717841
10.00 mm.Ø	0714441	50,00 mm.Ø	0718041

### Non-standardized round openings

ISO 3310.2	Code CISA	ISO 3310.2	Code CISA
11,00 mm.Ø	0714541	21,00 mm.Ø	0716081
12,00 mm.Ø	0714741	22,00 mm.Ø	0716141
13,00 mm.Ø	0714941	24,00 mm.Ø	0716341
14,50 mm.Ø	0715341	30,00 mm.Ø	0716941
15,00 mm.Ø	0715381	32,00 mm.Ø	0717141

### Other openings on request



## ACCESSORIES

Pan and Cover  
200 mm.Ø

Wet sieving  
pan and cover 200 mm. Ø

Cleaning kit

Calibration Certificate  
according to ISO 3310, ASTM E-11,  
AFNOR NF X-11 and/or BS410



**NOVETAL SARL**

1410, Chemin des Chaberts 83136 Garéoult France

Tel : + 33 (0) 4 94 86 47 09 - Email : [info@novetal.com](mailto:info@novetal.com) - Internet : [www.novetal.com](http://www.novetal.com)

TEST SIEVE

**200mm Ø**  
**50mm H**

STAINLESS  
STEEL FRAME

**200**



**C I S a**   
SIEVING TECHNOLOGIES





200

# 200mm Ø x 50mm H

STAINLESS STEEL FRAME



Request  
Calibration Certificate  
Service sieve



The sieve recommended by ISO, AFNOR, ASTM, BS, DIN, UNE standards.

Suitable for wet sieving.

Each sieve is laser marked with a serial number to ensure traceability.

Delivered with a Certificate of Compliance according to 2.1 EN 10204.

Mirror polished.

Frame material: AISI-304.

**Weight:** From 300 grams to 500 grams depending on the mesh opening.

**Recommended sample volumes depending on the opening:**

Opening	Volume	Opening	Volume	Opening	Volume
38 µ	25 cm <sup>3</sup>	125 µ	50 cm <sup>3</sup>	2.00 mm.	200 cm <sup>3</sup>
45 µ	30 cm <sup>3</sup>	250 µ	70 cm <sup>3</sup>	4.00 mm.	350 cm <sup>3</sup>
63 µ	35 cm <sup>3</sup>	500 µ	100 cm <sup>3</sup>	8.00 mm.	500 cm <sup>3</sup>
90 µ	40 cm <sup>3</sup>	1.00 mm	140 cm <sup>3</sup>	16.00 mm	1000 cm <sup>3</sup>

## ATTENTION

**200 mm sieves are not compatible with 8" sieves (203 mm Ø)**

## OPTIONS

- Calibration certificate with uncertainty value.
- Metal identification label.
- AISI-316 (1.4404) stainless steel frame.



## CONFIGURATIONS

1. Wire mesh screens, standards ISO 3310.1 - ASTM E-11-2013
2. Sieves with perforated plate, square holes. Standards ISO 3310.2 - ASTM E-323-2011
3. Sieves with perforated plate, round holes, standards ISO 3310.2 - ASTM E-323-2011
4. Sieves with perforated plates elongated, standard ISO 5223
5. Sieves with electroformed plates, standards ISO 3310.3 - ASTM E-161

## INCLUDES

- ✓ Individual packing of each sieve with 100% recycled cardboard box, which guarantees transport in perfect conditions.
- ✓ Test certificate according to standard 2.1. EN 10204.

## ACCESSORIES

- Cover 200mm.Ø (code 0800001).
- Cover 200mm.Ø wet way (code 0800004).
- Pan 200mm.Ø x 50mm.H (code 0800002).
- Pan 200mm.Ø x 50mm.H wet way (code 0800005).
- O ring 200mm.Ø (code J200).

200

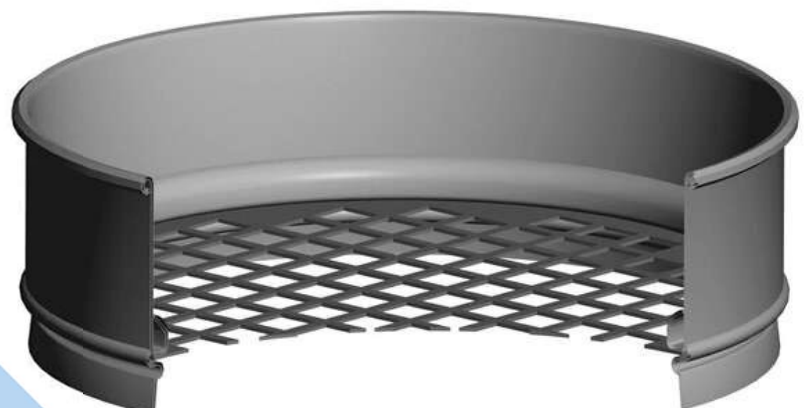
# 200mm Ø x 50mm H

STAINLESS STEEL FRAME



## 200.1 WIRE MESH SIEVES

ISO 3310.1	ASTM E-11-2013	Code CISA	ISO 3310.1	ASTM E-11-2013	Code CISA	ISO 3310.1	ASTM E-11-2013	Code CISA	ISO 3310.1	ASTM E-11-2013	Code CISA
20 µ	N° 635	0800601	160 µ		0804801	1,00 mm	N° 18	0809001	11.20 mm	7/16 in.	0814601
25 µ	N° 500	0800801	180 µ	N° 80	0805001	1,12 mm		0809201	12.50 mm	½ in.	0814801
32 µ	N° 450	0801001	200 µ		0805201	1,18 mm	N° 16	0809401	13.20 mm	0.530 in.	0815001
36 µ		0801201	212 µ	N° 70	0805401	1,25 mm		0809601	14.00 mm		0815201
38 µ	N° 400	0801401	224 µ		0805601	1,40 mm	N° 14	0809801	16.00 mm	5/8 in.	0815401
40 µ		0801601	250 µ	N° 60	0805801	1,60 mm		0810001	18.00 mm		0815601
45 µ	N° 325	0801801	280 µ		0806001	1,70 mm	N° 12	0810201	19.00 mm	3/4 in.	0815801
50 µ		0802001	300 µ	N° 50	0806201	1,80 mm		0810401	20.00 mm		0816001
53 µ	N° 270	0802201	315 µ		0806401	2,00 mm	N° 10	0810601	22.40 mm	7/8 in.	0816201
56 µ		0802401	355 µ	N° 45	0806601	2,24 mm		0810801	25.00 mm	1.00 in.	0816401
63 µ	N° 230	0802601	400 µ		0806801	2,36 mm	N° 8	0811001	26.50 mm	1.06 in.	0816601
71 µ		0802801	425 µ	N° 40	0807001	2,50 mm		0811201	28.00 mm		0816801
75 µ	N° 200	0803001	450 µ		0807201	2,80 mm	N° 7	0811401	31.50 mm	1 1/4 in.	0817001
80 µ		0803201	500 µ	N° 35	0807401	3,15 mm		0811601	35.50 mm		0817201
90 µ	N° 170	0803401	560 µ		0807601	3,35 mm	N° 6	0811801	37.50 mm	1 1/2 in.	0817401
100 µ		0803601	600 µ	N° 30	0807801	3,55 mm		0812001	40.00 mm		0817601
106 µ	N° 140	0803801	630 µ		0808001	4,00 mm	N° 5	0812201	45,00 mm	1 3/4 in.	0817801
112 µ		0804001	710 µ	N° 25	0808201	4.50 mm		0812401	50.00 mm	2.00 in.	0818001
125 µ	N° 120	0804201	800 µ		0808401	4.75 mm	N° 4	0812601	53.00 mm	2.12 in.	0818201
140 µ		0804401	850 µ	N° 20	0808601	5.00 mm		0812801	56.00 mm		0818401
150 µ	N° 100	0804601	900 µ		0808801	5.60 mm	N° 3½	0813001	63.00 mm	2 1/2 in.	0818601
						6.30 mm	¼ in.	0813201	71.00 mm		0818801
						6.70 mm	0.265 in.	0813401	75.00 mm	3.00 in.	0819001
						7.10 mm		0813601	80.00 mm		0819201
						8.00 mm	5/16 in.	0813801	90.00 mm	3 1/2 in.	0819401
						9.00 mm		0814001	100.00 mm	4.00 in.	0819601
						9.50 mm	3/8 in.	0814201	106.00 mm	4.24 in.	0819801
						10.00 mm		0814401	112.00 mm		0820001
									125.00 mm	5.00 in.	0820201



200

# 200mm Ø x 50mm H

STAINLESS STEEL FRAME



## 200.2 SIEVES WITH PERFORATED PLATE

### Square holes

The sieves with perforated plates included in this list strictly comply with the quality criteria required by ASTM E-323 and ISO 3310.2, as well as with regard to openings and distances between centres and thicknesses.

To avoid partial perforations with possible error in the screening result, the plates are not perforated in the area in contact with the frame.

The standard EN 933-2 recommends the use of sieves with square perforated plates (according to ISO 3310.2), when the opening is 4 mm. or more.

ISO 3310.2	ASTM E-323-2011	Code CISA	ISO 3310.2	ASTM E-323-2011	Code CISA
4,00 mm	5/32 in.	0812261	22.40 mm	7/8 in.	0816261
4.50 mm		0812461	25.00 mm	1.00 in.	0816461
4.75 mm	3/16 in.	0812661	26.50 mm	1 1/8 in.	0816661
5.00 mm		0812861	28.00 mm		0816861
5.60 mm	7/32 in.	0813061	31.50 mm	1 1/4 in.	0817061
6.30 mm	¼ in.	0813261	35.50 mm		0817261
6.70 mm	17/64 in.	0813461	37.50 mm	1 1/2 in.	0817461
7.10 mm		0813661	40.00 mm		0817661
8.00 mm	5/16 in.	0813861	45,00 mm	13/4 in.	0817861
9.00 mm		0814061	50.00 mm	2.00 in.	0818061
9.50 mm	3/8 in.	0814261	53.00 mm	2 1/8 in.	0818261
10.00 mm		0814461	56.00 mm		0818461
11.20 mm	7/16 in.	0814661	63.00 mm	2 1/2 in.	0818661
12.50 mm	½ in.	0814861	71.00 mm		0818861
13.20 mm	0.530 in.	0815061	75.00 mm	3.00 in.	0819061
14.00 mm		0815261	80.00 mm		0819261
16.00 mm	5/8 in.	0815461	90.00 mm	3 1/2 in.	0819461
18.00 mm		0815661	100.00 mm	4.00 in.	0819661
19.00 mm	3/4 in.	0815861	106.00 mm	4.24 in.	0819861
20.00 mm		0816061	112.00 mm		0820061
			125.00 mm	5.00 in.	0820261

### Material of the perforated plates

Stainless steel AISI-304



**NEW**  
CISA Qondo  
The best way to  
classify your sieves



200

# 200mm Ø x 50mm H

STAINLESS STEEL FRAME



## 200.3 SIEVES WITH PERFORATED PLATE

### Round holes



The sieves with the perforations 0.50 mm Ø, 1.00 mm Ø, 1.80 mm Ø, 4.00 mm Ø and 4.50 mm Ø are used for testing rapeseed, rice, soybean and other cereals.

### Material of the perforated plates

Stainless steel AISI-304

ISO 3310.2	Code CISA	ISO 3310.2	Code CISA
0.50 mm.Ø	0807441	11,20 mm.Ø	0814641
1.00 mm.Ø	0809041	12,50 mm.Ø	0814841
1.80 mm.Ø	0810441	13,20 mm.Ø	0815041
2.00 mm.Ø	0810641	14,00 mm.Ø	0815241
2.50 mm.Ø	0811241	16,00 mm.Ø	0815441
3.55 mm.Ø	0812041	18,00 mm.Ø	0815641
4.00 mm.Ø	0812241	19,00 mm.Ø	0815841
4.50 mm.Ø	0812441	20,00 mm.Ø	0816041
4.75 mm.Ø	0812641	22,40 mm.Ø	0816241
5.00 mm.Ø	0812841	25,00 mm.Ø	0816441
5.60 mm.Ø	0813041	26,50 mm.Ø	0816641
6.30 mm.Ø	0813241	28,00 mm.Ø	0816841
6.70 mm.Ø	0813441	31,50 mm.Ø	0817041
7.10 mm.Ø	0813641	35,50 mm.Ø	0817241
8.00 mm.Ø	0813841	37,50 mm.Ø	0817441
9.00 mm.Ø	0814041	40,00 mm.Ø	0817641
9.50 mm.Ø	0814241	45,00 mm.Ø	0817841
10.00 mm.Ø	0814441	50,00 mm.Ø	0818041

### Non-standardized round openings

ISO 3310.2	Code CISA	ISO 3310.2	Code CISA
11,00 mm.Ø	0814541	21,00 mm.Ø	0816081
12,00 mm.Ø	0814741	22,00 mm.Ø	0816141
13,00 mm.Ø	0814941	24,00 mm.Ø	0816341
14,50 mm.Ø	0815341	30,00 mm.Ø	0816941
15,00 mm.Ø	0815381	32,00 mm.Ø	0817141

### Other openings on request

## ACCESSORIES

Pan and Cover  
200 mm. Ø x 50 mm. H

Wet sieving  
pan and cover 200 mm. Ø

Cleaning kit

Calibration certificate  
with uncertainty value



NOVETAL SARL

1410, Chemin des Chaberts 83136 Garéoult France

Tel : + 33 (0) 4 94 86 47 09 - Email : [info@novetal.com](mailto:info@novetal.com) - Internet : [www.novetal.com](http://www.novetal.com)

200

# 200mm Ø x 50mm H

STAINLESS STEEL FRAME



## 200.4 SIEVES WITH PERFORATED PLATE

Elongated holes



Opening	Code CISA	Opening	Code CISA
1.00 x 20.00 mm	0830081	2.80 x 20.00 mm	0831481
1.50 x 20.00 mm	0830181	2.90 x 20.00 mm	0831581
1.70 x 20.00 mm	0830281	3.00 x 20.00 mm	0831681
1.80 x 20.00 mm	0830381	3.20 x 20.00 mm	0831781
1.90 x 20.00 mm	0830481	3.55 x 20.00 mm	0831881
2.00 x 20.00 mm	0830581	4.75 x 20.00 mm	0831981
2.10 x 20.00 mm	0830681	4.50 x 25.00 mm	0832181
2.20 x 20.00 mm	0830781	4.75 x 25.00 mm	0831981
2.30 x 20.00 mm	0830981	5.60 x 25.00 mm	0832081
2.40 x 20.00 mm	0831081	5.00 x 30.00 mm	0832281
2.50 x 20.00 mm	0831181	5.75 x 30.00 mm	0832381
2.60 x 20.00 mm	0831281	6.00 x 30.00 mm	0832481

The sieves mounted with elongated perforated plates are completely made of AISI-304 stainless steel. Their main field of application is the grain and cereal industry.

To obtain total accuracy in the tests, the plates are not perforated in the area in contact with the frame, which avoids partial holes that could potentially falsify the results.

## 200.5 SIEVES WITH ELECTROFORMED PLATES

Square holes

Sieves with electroformed sheets have much smaller tolerances than sieves with wire mesh. The tolerance for this type of sieve is +/- 2%. Compared to sieves with metal mesh, this tolerance is two to ten times higher, depending on the size of the opening.

These sieves with electroformed plates are used both for small sample sizes and for special materials, and above all for high-precision quality control. Each sieve is delivered with a certificate of conformity.

Opening	Code CISA	Opening	Code CISA
5 µ	0800151	90 µ	0803451
10 µ	0800251	106 µ	0803651
15 µ	0800451	125 µ	0804251
20 µ	0800651	150 µ	0804651
25 µ	0800851	180 µ	0805051
32 µ	0801051	212 µ	0805451
38 µ	0801451	250 µ	0805851
45 µ	0801851	300 µ	0806251
53 µ	0802251	355 µ	0806651
63 µ	0802651	425 µ	0807051
75 µ	0803051	500 µ	0807451

Due to the high price, compared to sieves with wire mesh, their use is limited to applications where the special qualities of the sieves are required. Sieves with electroformed plates are precision instruments that have to be treated with care.

TEST SIEVE

**8".Ø**

**2".H**

STAINLESS  
STEEL FRAME

**203**



**C I S a**   
SIEVING TECHNOLOGIES





203

# 8".Ø x 2".H

## STAINLESS STEEL FRAME



Request  
Calibration Certificate  
Service sieve



The sieve recommended by ASTM and BS standards.

Adapted for wet sieving.

Individual laser-engraved identification of each sieve to ensure traceability.

Includes certificate of attestation according to 2.1 EN 10204.

Mirror polishing.

**Weight:** From 300 grams to 500 grams depending on the mesh opening.

**Recommended sample volume depending on the opening:**

Opening	Volume	Opening	Volume	Opening	Volume
38 µ	25 cm <sup>3</sup>	125 µ	50 cm <sup>3</sup>	2.00 mm.	200 cm <sup>3</sup>
45 µ	30 cm <sup>3</sup>	250 µ	70 cm <sup>3</sup>	4.00 mm.	350 cm <sup>3</sup>
63 µ	35 cm <sup>3</sup>	500 µ	100 cm <sup>3</sup>	8.00 mm.	500 cm <sup>3</sup>
90 µ	40 cm <sup>3</sup>	1.00 mm	140 cm <sup>3</sup>	16.00 mm	1000 cm <sup>3</sup>



## CONFIGURATIONS

1. Sieves with metal mesh according to ISO 3310.1 - ASTM E-11-2013
2. Sieves with square perforated plate, standards ISO 3310.2 - ASTM E-323-2011
3. Sieves with round perforated plate, standards ISO 3310.2 - ASTM E-323-2011

## INCLUDED

- ✓ Individual packing of each sieve with 100% recycled cardboard box, which guarantees transport in perfect conditions.
- ✓ Test certificate according to standard 2.1.EN 10204.

## REMARK

The 200mm Ø sieves do not fit with the sieves of 203mm Ø

## OPTIONS

- Calibration certificate according to ASTM E-11, AFNOR NF X-11-504, BS 410 or ISO 3310 standards.
- Metal identification label.
- AISI-316 stainless steel frame for the pharmaceutical industry
- Support mesh assembly for openings < 100µm

## ACCESSORIES

- Pan 8".Ø (code 1000001).
- Pan 8".Ø wet way (code 1000011).
- Cover 8".Ø x 2".H (code 1000002).
- Cover 8".Ø x 2".H wet way (code 1000010).
- Rubber gasket 8".Ø (code J203).

203

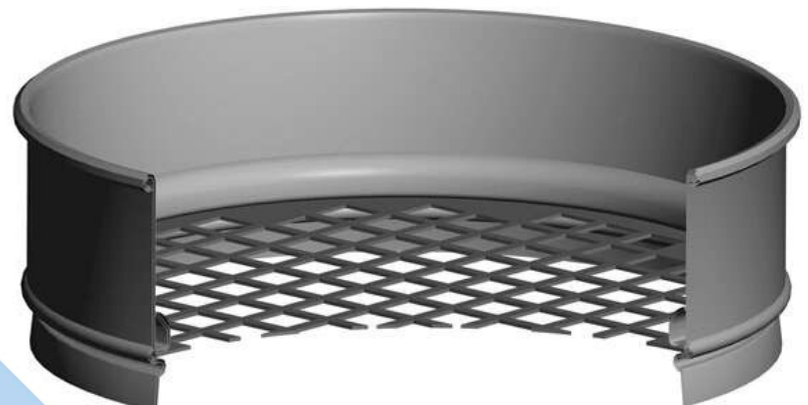
8".Ø x 2".H

STAINLESS STEEL FRAME



## 203.1 WIRE MESH SIEVES

ISO 3310.1	ASTM E-11-2013	Code CISA	ISO 3310.1	ASTM E-11-2013	Code CISA	ISO 3310.1	ASTM E-11-2013	Code CISA	ISO 3310.1	ASTM E-11-2013	Code CISA
20 µ	N° 635	1000601	160 µ		1004801	1,00 mm	N° 18	1009001	11.20 mm	7/16 in.	1014601
25 µ	N° 500	1000801	180 µ	N° 80	1005001	1,12 mm		1009201	12.50 mm	½ in.	1014801
32 µ	N° 450	1001001	200 µ		1005201	1,18 mm	N° 16	1009401	13.20 mm	0.530 in.	1015001
36 µ		1001201	212 µ	N° 70	1005401	1,25 mm		1009601	14.00 mm		1015201
38 µ	N° 400	1001401	224 µ		1005601	1,40 mm	N° 14	1009801	16.00 mm	5/8 in.	1015401
40 µ		1001601	250 µ	N° 60	1005801	1,60 mm		1010001	18.00 mm		1015601
45 µ	N° 325	1001801	280 µ		1006001	1,70 mm	N° 12	1010201	19.00 mm	3/4 in.	1015801
50 µ		1002001	300 µ	N° 50	1006201	1,80 mm		1010401	20.00 mm		1016001
53 µ	N° 270	1002201	315 µ		1006401	2,00 mm	N° 10	1010601	22.40 mm	7/8 in.	1016201
56 µ		1002401	355 µ	N° 45	1006601	2,24 mm		1010801	25.00 mm	1.00 in.	1016401
63 µ	N° 230	1002601	400 µ		1006801	2,36 mm	N° 8	1011001	26.50 mm	1.06 in.	1016601
71 µ		1002801	425 µ	N° 40	1007001	2,50 mm		1011201	28.00 mm		1016801
75 µ	N° 200	1003001	450 µ		1007201	2,80 mm	N° 7	1011401	31.50 mm	1 1/4 in.	1017001
80 µ		1003201	500 µ	N° 35	1007401	3,15 mm		1011601	35.50 mm		1017201
90 µ	N° 170	1003401	560 µ		1007601	3,35 mm	N° 6	1011801	37.50 mm	1 1/2 in.	1017401
100 µ		1003601	600 µ	N° 30	1007801	3,55 mm		1012001	40.00 mm		1017601
106 µ	N° 140	1003801	630 µ		1008001	4,00 mm	N° 5	1012201	45,00 mm	1 3/4 in.	1017801
112 µ		1004001	710 µ	N° 25	1008201	4.50 mm		1012401	50.00 mm	2.00 in.	1018001
125 µ	N° 120	1004201	800 µ		1008401	4.75 mm	N° 4	1012601	53.00 mm	2.12 in.	1018201
140 µ		1004401	850 µ	N° 20	1008601	5.00 mm		1012801	56.00 mm		1018401
150 µ	N° 100	1004601	900 µ		1008801	5.60 mm	N° 3½	1013001	63.00 mm	2 1/2 in.	1018601
						6.30 mm	¼ in.	1013201	71.00 mm		1018801
						6.70 mm	0.265 in.	1013401	75.00 mm	3.00 in.	1019001
						7.10 mm		1013601	80.00 mm		1019201
						8.00 mm	5/16 in.	1013801	90.00 mm	3 1/2 in.	1019401
						9.00 mm		1014001	100.00 mm	4.00 in.	1019601
						9.50 mm	3/8 in.	1014201	106.00 mm	4.24 in.	1019801
						10.00 mm		1014401	112.00 mm		1020001
									125.00 mm	5.00 in.	1020201



203

# 8".Ø x 2".H

STAINLESS STEEL FRAME



## 203.2 SIEVES WITH PERFORATED PLATE

### Square hole

The sieves with perforated plates included in this list strictly comply with the quality criteria required by ASTM E-323 and ISO 3310.2, as well as with regard to openings and distances between centers and thicknesses.

To avoid partial perforations with possible error in the screening result, the plates are not perforated in the area in contact with the frame.

The standard EN 933-2 recommends the use of sieves with square perforated plates (according to ISO 3310.2), when the opening is 4 mm or more.

ISO 3310.2	ASTM E-323-2011	Code CISA	ISO 3310.2	ASTM E-323-2011	Code CISA
4,00 mm	5/32 in.	1012261	22.40 mm	7/8 in.	1016261
4.50 mm		1012461	25.00 mm	1.00 in.	1016461
4.75 mm	3/16 in.	1012661	26.50 mm	1 1/8 in.	1016661
5.00 mm		1012861	28.00 mm		1016861
5.60 mm	7/32 in.	1013061	31.50 mm	1 1/4 in.	1017061
6.30 mm	¼ in.	1013261	35.50 mm		1017261
6.70 mm	17/64 in.	1013461	37.50 mm	1 1/2 in.	1017461
7.10 mm		1013661	40.00 mm		1017661
8.00 mm	5/16 in.	1013861	45,00 mm	13/4 in.	1017861
9.00 mm		1014061	50.00 mm	2.00 in.	1018061
9.50 mm	3/8 in.	1014261	53.00 mm	2 1/8 in.	1018261
10.00 mm		1014461	56.00 mm		1018461
11.20 mm	7/16 in.	1014661	63.00 mm	2 1/2 in.	1018661
12.50 mm	½ in.	1014861	71.00 mm		1018861
13.20 mm	0.530 in.	1015061	75.00 mm	3.00 in.	1019061
14.00 mm		1015261	80.00 mm		1019261
16.00 mm	5/8 in.	1015461	90.00 mm	3 1/2 in.	1019461
18.00 mm		1015661	100.00 mm	4.00 in.	1019661
19.00 mm	3/4 in.	1015861	106.00 mm	4.24 in.	1019861
20.00 mm		1016061	112.00 mm		1020061
			125.00 mm	5.00 in.	1020261

**Material of the perforated plates**  
Stainless steel AISI-304



**NEW**  
**CISA Qondo**  
The best way to  
classify your sieves



203

# 8".Ø x 2".H

STAINLESS STEEL FRAME



## 203.3 SIEVES WITH PERFORATED PLATE

### Round holes



ISO 3310.2	Code CISA	ISO 3310.2	Code CISA
0.50 mm.Ø	1007441	* 11,20 mm.Ø	1014641
1.00 mm.Ø	1009041	* 12,50 mm.Ø	1014841
1.80 mm.Ø	1010441	* 13,20 mm.Ø	1015041
2.00 mm.Ø	1010641	14,00 mm.Ø	1015241
2.50 mm.Ø	1011241	* 16,00 mm.Ø	1015441
3.55 mm.Ø	1012041	18,00 mm.Ø	1015641
* 4.00 mm.Ø	1012241	* 19,00 mm.Ø	1015841
4.50 mm.Ø	1012441	20,00 mm.Ø	1016041
* 4.75 mm.Ø	1012641	* 22,40 mm.Ø	1016241
5.00 mm.Ø	1012841	* 25,00 mm.Ø	1016441
* 5.60 mm.Ø	1013041	* 26,50 mm.Ø	1016641
* 6.30 mm.Ø	1013241	28,00 mm.Ø	1016841
* 6.70 mm.Ø	1013441	* 31,50 mm.Ø	1017041
7.10 mm.Ø	1013641	35,50 mm.Ø	1017241
* 8.00 mm.Ø	1013841	* 37,50 mm.Ø	1017441
9.00 mm.Ø	1014041	40,00 mm.Ø	1017641
* 9.50 mm.Ø	1014241	* 45,00 mm.Ø	1017841
10.00 mm.Ø	1014441	* 50,00 mm.Ø	1018041

\* according to ASTM E-323-2011 standard

### Non-standardized round openings

ISO 3310.2	Code CISA	ISO 3310.2	Code CISA
11,00 mm.Ø	1014541	21,00 mm.Ø	1016081
12,00 mm.Ø	1014741	22,00 mm.Ø	1016141
13,00 mm.Ø	1014941	24,00 mm.Ø	1016341
14,50 mm.Ø	1015341	30,00 mm.Ø	1016941
15,00 mm.Ø	1015381	32,00 mm.Ø	1017141

### Other openings on request

### Material of the perforated plates

Stainless steel AISI-304

## ACCESSORIES

Pan and cover  
8".Ø x 2".H

Wet sieving  
pan and cover 8".Ø

Rubber gasket  
8".Ø

Calibration certificate  
with uncertainty value



TEST SIEVE  
**250 mm Ø**  
**70 mm H**

STAINLESS  
STEEL FRAME

**250**



**C I S a**   
SIEVING TECHNOLOGIES





250

# 250 mm Ø x 70 mm H

STAINLESS STEEL FRAME



Request  
Calibration Certificate  
Service sieve



For medium grain sizes.

recommended by ISO, ASTM and BS standards.

Individual laser-engraved identification of each sieve to ensure traceability.

Includes certificate of attestation according to 2.1 EN 10204.

Mirror polishing.

Frame material: AISI-304.

**Weight:** From 610 grams to 900 grams depending on the mesh opening.

**Recommended sample volume:**

Opening	Volume	Opening	Volume	Opening	Volume
38 µ	50 cm <sup>3</sup>	125 µ	120 cm <sup>3</sup>	2.00 mm.	400 cm <sup>3</sup>
45 µ	60 cm <sup>3</sup>	250 µ	140 cm <sup>3</sup>	4.00 mm.	700 cm <sup>3</sup>
63 µ	70 cm <sup>3</sup>	500 µ	200 cm <sup>3</sup>	8.00 mm.	1000 cm <sup>3</sup>
90 µ	80 cm <sup>3</sup>	1.00 mm	280 cm <sup>3</sup>	16.00 mm	1500 cm <sup>3</sup>



## CONFIGURATIONS

1. Sieves with metal mesh according to ISO 3310.1 - ASTM E-11-2013
2. Sieves with perforated plate, standards ISO 3310.2 - ASTM E-323-2011

## INCLUDED

- ✓ Individual packing of each sieve with 100% recycled cardboard box, **which guarantees transport in perfect conditions.**
- ✓ Test certificate according to standard 2.1.EN 10204.

## ACCESSORIES

- Pan 250mm.Ø stainless steel (code 1200001).
- Cover 250mm.Ø x 70mm.H. stainless steel. (code 1200002).

## OPTIONS

- Calibration certificate with uncertainty value.
- Stainless steel frame AISI-316 (1.4404).



250

# 250 mm Ø x 70 mm H

STAINLESS STEEL FRAME



## 250.1 WIRE MESH SIEVES

ISO 3310.1	ASTM E-11-2013	Code CISA	ISO 3310.1	ASTM E-11-2013	Code CISA	ISO 3310.1	ASTM E-11-2013	Code CISA	ISO 3310.1	ASTM E-11-2013	Code CISA
20 µ	N° 635	1200601	160 µ		1204801	1,00 mm	N° 18	1209001	11.20 mm	7/16 in.	1214601
25 µ	N° 500	1200801	180 µ	N° 80	1205001	1,12 mm		1209201	12.50 mm	½ in.	1214801
32 µ	N° 450	1201001	200 µ		1205201	1,18 mm	N° 16	1209401	13.20 mm	0.530 in.	1215001
36 µ		1201201	212 µ	N° 70	1205401	1,25 mm		1209601	14.00 mm		1215201
38 µ	N° 400	1201401	224 µ		1205601	1,40 mm	N° 14	1209801	16.00 mm	5/8 in.	1215401
40 µ		1201601	250 µ	N° 60	1205801	1,60 mm		1210001	18.00 mm		1215601
45 µ	N° 325	1201801	280 µ		1206001	1,70 mm	N° 12	1210201	19.00 mm	3/4 in.	1215801
50 µ		1202001	300 µ	N° 50	1206201	1,80 mm		1210401	20.00 mm		1216001
53 µ	N° 270	1202201	315 µ		1206401	2,00 mm	N° 10	1210601	22.40 mm	7/8 in.	1216201
56 µ		1202401	355 µ	N° 45	1206601	2,24 mm		1210801	25.00 mm	1.00 in.	1216401
63 µ	N° 230	1202601	400 µ		1206801	2,36 mm	N° 8	1211001	26.50 mm	1.06 in.	1216601
71 µ		1202801	425 µ	N° 40	1207001	2,50 mm		1211201	28.00 mm		1216801
75 µ	N° 200	1203001	450 µ		1207201	2,80 mm	N° 7	1211401	31.50 mm	1 1/4 in.	1217001
80 µ		1203201	500 µ	N° 35	1207401	3,15 mm		1211601	35.50 mm		1217201
90 µ	N° 170	1203401	560 µ		1207601	3,35 mm	N° 6	1211801	37.50 mm	1 1/2 in.	1217401
100 µ		1203601	600 µ	N° 30	1207801	3,55 mm		1212001	40.00 mm		1217601
106 µ	N° 140	1203801	630 µ		1208001	4,00 mm	N° 5	1212201	45,00 mm	1 3/4 in.	1217801
112 µ		1204001	710 µ	N° 25	1208201	4.50 mm		1212401	50.00 mm	2.00 in.	1218001
125 µ	N° 120	1204201	800 µ		1208401	4.75 mm	N° 4	1212601	53.00 mm	2.12 in.	1218201
140 µ		1204401	850 µ	N° 20	1208601	5.00 mm		1212801	56.00 mm		1218401
150 µ	N° 100	1204601	900 µ		1208801	5.60 mm	N° 3½	1213001	63.00 mm	2 1/2 in.	1218601
						6.30 mm	¼ in.	1213201	71.00 mm		1218801
						6.70 mm	0.265 in.	1213401	75.00 mm	3.00 in.	1219001
						7.10 mm		1213601	80.00 mm		1219201
						8.00 mm	5/16 in.	1213801	90.00 mm	3 1/2 in.	1219401
						9.00 mm		1214001	100.00 mm	4.00 in.	1219601
						9.50 mm	3/8 in.	1214201	106.00 mm	4.24 in.	1219801
						10.00 mm		1214401	112.00 mm		1220001
									125.00 mm	5.00 in.	1220201

250

# 250 mm Ø x 70 mm H

STAINLESS STEEL FRAME



## SIEVES WITH PERFORATED PLATE

### 250.2 Square hole

ISO 3310.2	ASTM E-323-2011	Code CISA	ISO 3310.2	ASTM E-323-2011	Code CISA
4,00 mm	5/32 in.	1212261	22.40 mm	7/8 in.	1216261
4.50 mm		1212461	25.00 mm	1.00 in.	1216461
4.75 mm	3/16 in.	1212661	26.50 mm	11/18 in.	1216661
5.00 mm		1212861	28.00 mm		1216861
5.60 mm	7/32 in.	1213061	31.50 mm	1 1/4 in.	1217061
6.30 mm	¼ in.	1213261	35.50 mm		1217261
6.70 mm	17/64 in.	1213461	37.50 mm	1 1/2 in.	1217461
7.10 mm		1213661	40.00 mm		1217661
8.00 mm	5/16 in.	1213861	45,00 mm	1 3/4 in.	1217861
9.00 mm		1214061	50.00 mm	2.00 in.	1218061
9.50 mm	3/8 in.	1214261	53.00 mm	2 1/8 in.	1218261
10.00 mm		1214461	56.00 mm		1218461
11.20 mm	7/16 in.	1214661	63.00 mm	2 1/2 in.	1218661
12.50 mm	½ in.	1214861	71.00 mm		1218861
13.20 mm	0.530 in.	1215061	75.00 mm	3.00 in.	1219061
14.00 mm		1215261	80.00 mm		1219261
16.00 mm	5/8 in.	1215461	90.00 mm	3 1/2 in.	1219461
18.00 mm		1215661	100.00 mm	4.00 in.	1219661
19.00 mm	3/4 in.	1215861	106.00 mm	4.24 in.	1219861
20.00 mm		1216061	112.00 mm		1220061
			125.00 mm	5.00 in.	1220261

### 250.3 Round holes

ISO 3310.2	ASTM E-323-2011	Code CISA	ISO 3310.2	ASTM E-323-2011	Code CISA
4,00 mm	5/32 in.	1212241	22.40 mm	7/8 in.	1216241
4.50 mm		1212441	25.00 mm	1.00 in.	1216441
4.75 mm	3/16 in.	1212641	26.50 mm	11/18 in.	1216641
5.00 mm		1212841	28.00 mm		1216841
5.60 mm	7/32 in.	1213041	31.50 mm	1 1/4 in.	1217041
6.30 mm	¼ in.	1213241	35.50 mm		1217241
6.70 mm	17/64 in.	1213441	37.50 mm	1 1/2 in.	1217441
7.10 mm		1213641	40.00 mm		1217641
8.00 mm	5/16 in.	1213841	45,00 mm	1 3/4 in.	1217841
9.00 mm		1214041	50.00 mm	2.00 in.	1218041
9.50 mm	3/8 in.	1214241	53.00 mm	2 1/8 in.	1218241
10.00 mm		1214441	56.00 mm		1218441
11.20 mm	7/16 in.	1214641	63.00 mm	2 1/2 in.	1218641
12.50 mm	½ in.	1214841	71.00 mm		1218841
13.20 mm	0.530 in.	1215041	75.00 mm	3.00 in.	1219041
14.00 mm		1215241	80.00 mm		1219241
16.00 mm	5/8 in.	1215441	90.00 mm	3 1/2 in.	1219441
18.00 mm		1215641	100.00 mm	4.00 in.	1219641
19.00 mm	3/4 in.	1215841	106.00 mm	4.24 in.	1219841
20.00 mm		1216041	112.00 mm		1220041
			125.00 mm	5.00 in.	1220241

## ACCESSORIES

Pan and cover  
250 mm. Ø x 70 mm. H

Wet sieving  
pan and cover 250 mm. Ø

Cleaning kit

Calibration certificate  
with uncertainty value.



NOVETAL SARL

1410, Chemin des Chaberts 83136 Garéoult France

Tel : + 33 (0) 4 94 86 47 09 - Email : [info@novetal.com](mailto:info@novetal.com) - Internet : [www.novetal.com](http://www.novetal.com)

TEST SIEVE

**300 mm Ø**

**70 mm H**

STAINLESS

STEEL FRAME

**300**



**C I S a**   
SIEVING TECHNOLOGIES





300

# 300 mm Ø x 70 mm H

STAINLESS STEEL FRAME



Request  
Calibration Certificate  
Service sieve



For medium grainsizes.

The sieve recommended by ISO, ASTM, BS standards.

Each sieve is laser marked with a serial number to ensure traceability.

Delivered with a **Certificate of Compliance** according to 2.1 EN 10204.

Mirror polished.

Frame material: AISI-304.

**Weight:** From 1250 grams to 1800 grams depending on the mesh opening.

## Recommended product volumes:

Opening	Volume	Opening	Volume	Opening	Volume
38 µ	100 cm <sup>3</sup>	125 µ	200 cm <sup>3</sup>	2.00 mm.	400 cm <sup>3</sup>
45 µ	120 cm <sup>3</sup>	250 µ	280 cm <sup>3</sup>	4.00 mm.	1400 cm <sup>3</sup>
63 µ	140 cm <sup>3</sup>	500 µ	400 cm <sup>3</sup>	8.00 mm.	2000 cm <sup>3</sup>
90 µ	160 cm <sup>3</sup>	1.00mm	560 cm <sup>3</sup>	16.00 mm	2500 cm <sup>3</sup>



## CONFIGURATIONS

1. Sieves with wire mesh, standards ISO 3310.1 - ASTM E-11-2013
2. Sieves with perforated plates, standards ISO 3310.2 - ASTM E-323-2011

## INCLUDES

- ✓ Individual packing of each sieve with 100% recycled cardboard box, **which guarantees transport in perfect conditions.**
- ✓ Test certificate according to standard 2.1. EN 10204.

## ACCESSORIES

- Cover 300mm.Ø stainless steel (code 1600001).
- Pan 300mm.Ø x 70mm.H. stainless steel (code 1600002).

## OPTIONS

- Calibration certificate with uncertainty value.
- AISI-316 (1.4404) stainless steel frame.

300

# 300 mm Ø x 70 mm H

STAINLESS STEEL FRAME



## 300.1 SIEVES WITH WIRE MESH

ISO 3310.1	ASTM E-11-2013	Code CISA	ISO 3310.1	ASTM E-11-2013	Code CISA	ISO 3310.1	ASTM E-11-2013	Code CISA	ISO 3310.1	ASTM E-11-2013	Code CISA
20 µ	N° 635	1600601	160 µ		1604801	1,00 mm	N° 18	1609001	11.20 mm	7/16 in.	1614601
25 µ	N° 500	1600801	180 µ	N° 80	1605001	1,12 mm		1609201	12.50 mm	½ in.	1614801
32 µ	N° 450	1601001	200 µ		1605201	1,18 mm	N° 16	1609401	13.20 mm	0.530 in.	1615001
36 µ		1601201	212 µ	N° 70	1605401	1,25 mm		1609601	14.00 mm		1615201
38 µ	N° 400	1601401	224 µ		1605601	1,40 mm	N° 14	1609801	16.00 mm	5/8 in.	1615401
40 µ		1601601	250 µ	N° 60	1605801	1,60 mm		1610001	18.00 mm		1615601
45 µ	N° 325	1601801	280 µ		1606001	1,70 mm	N° 12	1610201	19.00 mm	3/4 in.	1615801
50 µ		1602001	300 µ	N° 50	1606201	1,80 mm		1610401	20.00 mm		1616001
53 µ	N° 270	1602201	315 µ		1606401	2,00 mm	N° 10	1610601	22.40 mm	7/8 in.	1616201
56 µ		1602401	355 µ	N° 45	1606601	2,24 mm		1610801	25.00 mm	1.00 in.	1616401
63 µ	N° 230	1602601	400 µ		1606801	2,36 mm	N° 8	1611001	26.50 mm	1.06 in.	1616601
71 µ		1602801	425 µ	N° 40	1607001	2,50 mm		1611201	28.00 mm		1616801
75 µ	N° 200	1603001	450 µ		1607201	2,80 mm	N° 7	1611401	31.50 mm	1 1/4 in.	1617001
80 µ		1603201	500 µ	N° 35	1607401	3,15 mm		1611601	35.50 mm		1617201
90 µ	N° 170	1603401	560 µ		1607601	3,35 mm	N° 6	1611801	37.50 mm	1 1/2 in.	1617401
100 µ		1603601	600 µ	N° 30	1607801	3,55 mm		1612001	40.00 mm		1617601
106 µ	N° 140	1603801	630 µ		1608001	4,00 mm	N° 5	1612201	45,00 mm	1 3/4 in.	1617801
112 µ		1604001	710 µ	N° 25	1608201	4.50 mm		1612401	50.00 mm	2.00 in.	1618001
125 µ	N° 120	1604201	800 µ		1608401	4.75 mm	N° 4	1612601	53.00 mm	2.12 in.	1618201
140 µ		1604401	850 µ	N° 20	1608601	5.00 mm		1612801	56.00 mm		1618401
150 µ	N° 100	1604601	900 µ		1608801	5.60 mm	N° 3½	1613001	63.00 mm	2 1/2 in.	1618601
						6.30 mm	¼ in.	1613201	71.00 mm		1618801
						6.70 mm	0.265 in.	1613401	75.00 mm	3.00 in.	1619001
						7.10 mm		1613601	80.00 mm		1619201
						8.00 mm	5/16 in.	1613801	90.00 mm	3 1/2 in.	1619401
						9.00 mm		1614001	100.00 mm	4.00 in.	1619601
						9.50 mm	3/8 in.	1614201	106.00 mm	4.24 in.	1619801
						10.00 mm		1614401	112.00 mm		1620001
									125.00 mm	5.00 in.	1620201

300

# 300 mm Ø x 70 mm H

STAINLESS STEEL FRAME



## SIEVES WITH PERFORATED PLATE

### 300.2 Square holes

ISO 3310.2	ASTM E-323-2011	Code CISA	ISO 3310.2	ASTM E-323-2011	Code CISA
4,00 mm	5/32 in.	1612261	22.40 mm	7/8 in.	1616261
4.50 mm		1612461	25.00 mm	1.00 in.	1616461
4.75 mm	3/16 in.	1612661	26.50 mm	11/18 in.	1616661
5.00 mm		1612861	28.00 mm		1616861
5.60 mm	7/32 in.	1613061	31.50 mm	1 1/4 in.	1617061
6.30 mm	¼ in.	1613261	35.50 mm		1617261
6.70 mm	17/64 in.	1613461	37.50 mm	1 1/2 in.	1617461
7.10 mm		1613661	40.00 mm		1617661
8.00 mm	5/16 in.	1613861	45,00 mm	1 3/4 in.	1617861
9.00 mm		1614061	50.00 mm	2.00 in.	1618061
9.50 mm	3/8 in.	1614261	53.00 mm	2 1/8 in.	1618261
10.00 mm		1614461	56.00 mm		1618461
11.20 mm	7/16 in.	1614661	63.00 mm	2 1/2 in.	1618661
12.50 mm	½ in.	1614861	71.00 mm		1618861
13.20 mm	0.530 in.	1615061	75.00 mm	3.00 in.	1619061
14.00 mm		1615261	80.00 mm		1619261
16.00 mm	5/8 in.	1615461	90.00 mm	3 1/2 in.	1619461
18.00 mm		1615661	100.00 mm	4.00 in.	1619661
19.00 mm	3/4 in.	1615861	106.00 mm	4.24 in.	1619861
20.00 mm		1616061	112.00 mm		1620061
			125.00 mm	5.00 in.	1620261

### 300.3 Round holes

ISO 3310.2	ASTM E-323-2011	Code CISA	ISO 3310.2	ASTM E-323-2011	Code CISA
4,00 mm	5/32 in.	1612241	22.40 mm	7/8 in.	1616241
4.50 mm		1612441	25.00 mm	1.00 in.	1616441
4.75 mm	3/16 in.	1612641	26.50 mm	11/18 in.	1616641
5.00 mm		1612841	28.00 mm		1616841
5.60 mm	7/32 in.	1613041	31.50 mm	1 1/4 in.	1617041
6.30 mm	¼ in.	1613241	35.50 mm		1617241
6.70 mm	17/64 in.	1613441	37.50 mm	1 1/2 in.	1617441
7.10 mm		1613641	40.00 mm		1617641
8.00 mm	5/16 in.	1613841	45,00 mm	1 3/4 in.	1617841
9.00 mm		1614041	50.00 mm	2.00 in.	1618041
9.50 mm	3/8 in.	1614241	53.00 mm	2 1/8 in.	1618241
10.00 mm		1614441	56.00 mm		1618441
11.20 mm	7/16 in.	1614641	63.00 mm	2 1/2 in.	1618641
12.50 mm	½ in.	1614841	71.00 mm		1618841
13.20 mm	0.530 in.	1615041	75.00 mm	3.00 in.	1619041
14.00 mm		1615241	80.00 mm		1619241
16.00 mm	5/8 in.	1615441	90.00 mm	3 1/2 in.	1619441
18.00 mm		1615641	100.00 mm	4.00 in.	1619641
19.00 mm	3/4 in.	1615841	106.00 mm	4.24 in.	1619841
20.00 mm		1616041	112.00 mm		1620041
			125.00 mm	5.00 in.	1620241

## ACCESSORIES

Pan and Cover  
300 mm. Ø x 70 mm. H

Wet sieving  
pan and cover 300 mm. Ø

Cleaning kit

Calibration certificate  
with uncertainty value



NOVETAL SARL

1410, Chemin des Chaberts 83136 Garéoult France

Tel : + 33 (0) 4 94 86 47 09 - Email : [info@novetal.com](mailto:info@novetal.com) - Internet : [www.novetal.com](http://www.novetal.com)



TEST SIEVE

**12".Ø**

**3".H**

STAINLESS  
STEEL FRAME

**305**



**C I S a**   
SIEVING TECHNOLOGIES



305

# 12".Ø x 3".H

STAINLESS STEEL FRAME



Request  
Calibration Certificate  
Service sieve



For medium grain sizes.

Recommended by ASTM and BS standards.

Individual laser-engraved identification of each sieve to ensure traceability.

Includes certificate of attestation according to 2.1 EN 10204.

Mirror polished.

Frame material: AISI-304.

**Weight:** From 1250 grams to 1800 grams depending on the mesh opening.

**Recommended sample volume:**

Opening	Volume	Opening	Volume	Opening	Volume
38 µ	100 cm <sup>3</sup>	125 µ	200 cm <sup>3</sup>	2.00 mm.	400 cm <sup>3</sup>
45 µ	120 cm <sup>3</sup>	250 µ	280 cm <sup>3</sup>	4.00 mm.	1400 cm <sup>3</sup>
63 µ	140 cm <sup>3</sup>	500 µ	400 cm <sup>3</sup>	8.00 mm.	2000 cm <sup>3</sup>
90 µ	160 cm <sup>3</sup>	1.00 mm	560 cm <sup>3</sup>	16.00 mm	2500 cm <sup>3</sup>



## CONFIGURATIONS

1. Sieves with metal mesh according to ISO 3310.1 - ASTM E-11-2013
2. Sieves with perforated plate, standards ISO 3310.2 - ASTM E-323-2011

## INCLUDED

- ✓ Individual packing of each sieve with 100% recycled cardboard box, which guarantees transport in perfect conditions..
- ✓ Test certificate according to standard 2.1.EN 10204.

## ACCESSORIES

- Pan 12".Ø stainless steel (code 1700001).
- Cover 12".Ø x 3".H. stainless steel. (code 1700002).
- Rubber gasket 8".Ø (code J305)

## OPTIONS

- Calibration certificate with uncertainty value.
- Metal identification label.
- Stainless steel frame AISI-316 (1.4404).

305

# 12".Ø x 3".H

STAINLESS STEEL FRAME



## 305.1 WIRE MESH SIEVES

ISO 3310.1	ASTM E-11-2013	Code CISA	ISO 3310.1	ASTM E-11-2013	Code CISA	ISO 3310.1	ASTM E-11-2013	Code CISA	ISO 3310.1	ASTM E-11-2013	Code CISA
20 µ	N° 635	1700601	160 µ		1704801	1,00 mm	N° 18	1709001	11.20 mm	7/16 in.	1714601
25 µ	N° 500	1700801	180 µ	N° 80	1705001	1,12 mm		1709201	12.50 mm	½ in.	1714801
32 µ	N° 450	1701001	200 µ		1705201	1,18 mm	N° 16	1709401	13.20 mm	0.530 in.	1715001
36 µ		1701201	212 µ	N° 70	1705401	1,25 mm		1709601	14.00 mm		1715201
38 µ	N° 400	1701401	224 µ		1705601	1,40 mm	N° 14	1709801	16.00 mm	5/8 in.	1715401
40 µ		1701601	250 µ	N° 60	1705801	1,60 mm		1710001	18.00 mm		1715601
45 µ	N° 325	1701801	280 µ		1706001	1,70 mm	N° 12	1710201	19.00 mm	3/4 in.	1715801
50 µ		1702001	300 µ	N° 50	1706201	1,80 mm		1710401	20.00 mm		1716001
53 µ	N° 270	1702201	315 µ		1706401	2,00 mm	N° 10	1710601	22.40 mm	7/8 in.	1716201
56 µ		1702401	355 µ	N° 45	1706601	2,24 mm		1710801	25.00 mm	1.00 in.	1716401
63 µ	N° 230	1702601	400 µ		1706801	2,36 mm	N° 8	1711001	26.50 mm	1.06 in.	1716601
71 µ		1702801	425 µ	N° 40	1707001	2,50 mm		1711201	28.00 mm		1716801
75 µ	N° 200	1703001	450 µ		1707201	2,80 mm	N° 7	1711401	31.50 mm	1 1/4 in.	1717001
80 µ		1703201	500 µ	N° 35	1707401	3,15 mm		1711601	35.50 mm		1717201
90 µ	N° 170	1703401	560 µ		1707601	3,35 mm	N° 6	1711801	37.50 mm	1 1/2 in.	1717401
100 µ		1703601	600 µ	N° 30	1707801	3,55 mm		1712001	40.00 mm		1717601
106 µ	N° 140	1703801	630 µ		1708001	4,00 mm	N° 5	1712201	45,00 mm	1 3/4 in.	1717801
112 µ		1704001	710 µ	N° 25	1708201	4.50 mm		1712401	50.00 mm	2.00 in.	1718001
125 µ	N° 120	1704201	800 µ		1708401	4.75 mm	N° 4	1712601	53.00 mm	2.12 in.	1718201
140 µ		1704401	850 µ	N° 20	1708601	5.00 mm		1712801	56.00 mm		1718401
150 µ	N° 100	1704601	900 µ		1708801	5.60 mm	N° 3½	1713001	63.00 mm	2 1/2 in.	1718601
						6.30 mm	¼ in.	1713201	71.00 mm		1718801
						6.70 mm	0.265 in.	1713401	75.00 mm	3.00 in.	1719001
						7.10 mm		1713601	80.00 mm		1719201
						8.00 mm	5/16 in.	1713801	90.00 mm	3 1/2 in.	1719401
						9.00 mm		1714001	100.00 mm	4.00 in.	1719601
						9.50 mm	3/8 in.	1714201	106.00 mm	4.24 in.	1719801
						10.00 mm		1714401	112.00 mm		1720001
									125.00 mm	5.00 in.	1720201



305

12".Ø x 3".H

STAINLESS STEEL FRAME



## SIEVES WITH PERFORATED PLATE

### 305.2 Square hole

ISO 3310.2	ASTM E-323-2011	Code CISA	ISO 3310.2	ASTM E-323-2011	Code CISA
4,00 mm	5/32 in.	1712261	22.40 mm	7/8 in.	1716261
4.50 mm		1712461	25.00 mm	1.00 in.	1716461
4.75 mm	3/16 in.	1712661	26.50 mm	11/18 in.	1716661
5.00 mm		1712861	28.00 mm		1716861
5.60 mm	7/32 in.	1713061	31.50 mm	1 1/4 in.	1717061
6.30 mm	¼ in.	1713261	35.50 mm		1717261
6.70 mm	17/64 in.	1713461	37.50 mm	1 1/2 in.	1717461
7.10 mm		1713661	40.00 mm		1717661
8.00 mm	5/16 in.	1713861	45,00 mm	1 3/4 in.	1717861
9.00 mm		1714061	50.00 mm	2.00 in.	1718061
9.50 mm	3/8 in.	1714261	53.00 mm	2 1/8 in.	1718261
10.00 mm		1714461	56.00 mm		1718461
11.20 mm	7/16 in.	1714661	63.00 mm	2 1/2 in.	1718661
12.50 mm	½ in.	1714861	71.00 mm		1718861
13.20 mm	0.530 in.	1715061	75.00 mm	3.00 in.	1719061
14.00 mm		1715261	80.00 mm		1719261
16.00 mm	5/8 in.	1715461	90.00 mm	3 1/2 in.	1719461
18.00 mm		1715661	100.00 mm	4.00 in.	1719661
19.00 mm	3/4 in.	1715861	106.00 mm	4.24 in.	1719861
20.00 mm		1716061	112.00 mm		1720061
			125.00 mm	5.00 in.	1720261

### 305.3 Round hole

ISO 3310.2	ASTM E-323-2011	Code CISA	ISO 3310.2	ASTM E-323-2011	Code CISA
4,00 mm	5/32 in.	1712241	22.40 mm	7/8 in.	1716241
4.50 mm		1712441	25.00 mm	1.00 in.	1716441
4.75 mm	3/16 in.	1712641	26.50 mm	11/18 in.	1716641
5.00 mm		1712841	28.00 mm		1716841
5.60 mm	7/32 in.	1713041	31.50 mm	1 1/4 in.	1717041
6.30 mm	¼ in.	1713241	35.50 mm		1717241
6.70 mm	17/64 in.	1713441	37.50 mm	1 1/2 in.	1717441
7.10 mm		1713641	40.00 mm		1717641
8.00 mm	5/16 in.	1713841	45,00 mm	1 3/4 in.	1717841
9.00 mm		1714041	50.00 mm	2.00 in.	1718041
9.50 mm	3/8 in.	1714241	53.00 mm	2 1/8 in.	1718241
10.00 mm		1714441	56.00 mm		1718441
11.20 mm	7/16 in.	1714641	63.00 mm	2 1/2 in.	1718641
12.50 mm	½ in.	1714841	71.00 mm		1718841
13.20 mm	0.530 in.	1715041	75.00 mm	3.00 in.	1719041
14.00 mm		1715241	80.00 mm		1719241
16.00 mm	5/8 in.	1715441	90.00 mm	3 1/2 in.	1719441
18.00 mm		1715641	100.00 mm	4.00 in.	1719641
19.00 mm	3/4 in.	1715841	106.00 mm	4.24 in.	1719841
20.00 mm		1716041	112.00 mm		1720041
			125.00 mm	5.00 in.	1720241

## ACCESSORIES

Pan and cover  
12".Ø x 3".H

Rubber gasket  
12".Ø

Cleaning kit

Calibration certificate  
with uncertainty value.



NOVETAL SARL

1410, Chemin des Chaberts 83136 Garéoult France

Tel : + 33 (0) 4 94 86 47 09 - Email : [info@novetal.com](mailto:info@novetal.com) - Internet : [www.novetal.com](http://www.novetal.com)

TEST SIEVE

**315 mm Ø**

**80 mm H**

STAINLESS

STEEL FRAME

**315**



**C I S a**   
SIEVING TECHNOLOGIES



315

# 315 mm Ø x 80 mm H

STAINLESS STEEL FRAME



Request  
Calibration Certificate  
Service sieve



For medium grain sizes.

Sieve recommended by AFNOR X11-504 standards.

Each sieve is laser marked with a serial number to ensure traceability.

Delivered with a Certificate of Compliance according to 2.1 EN 10204.

Mirror polished.

Frame material: AISI-304.

**Weight:** From 1250 grams to 1800 grams depending on the mesh opening..

**Recommended sample volumes:**

Opening	Volume	Opening	Volume	Opening	Volume
38 µ	100 cm <sup>3</sup>	125 µ	200 cm <sup>3</sup>	2.00 mm.	400 cm <sup>3</sup>
45 µ	120 cm <sup>3</sup>	250 µ	280 cm <sup>3</sup>	4.00 mm.	1400 cm <sup>3</sup>
63 µ	140 cm <sup>3</sup>	500 µ	400 cm <sup>3</sup>	8.00 mm.	2000 cm <sup>3</sup>
90 µ	160 cm <sup>3</sup>	1.00 mm	560 cm <sup>3</sup>	16.00 mm	2500 cm <sup>3</sup>



## CONFIGURATION

1. Sieves with wire mesh, standard ISO 3310.1.
2. Sieves with perforated plate, standard ISO 3310.2.

## INCLUDES

- ✓ Individual packing of each sieve with 100% recycled cardboard box, which guarantees transport in perfect conditions.
- ✓ Test certificate according to standard 2.1. EN 10204.

## ACCESSORIES

- Cover 315mm.Ø stainless steel (code 1500001).
- Pan 315mm.Ø x 80mm.H stainless steel (code 1500002).

## OPTIONS

- Calibration certificate with uncertainty value.
- AISI-316 (1.4404) stainless steel frame.



315

# 315 mm Ø x 80 mm H

STAINLESS STEEL FRAME



## 315.1 SIEVES WITH WIRE MESH

ISO 3310.1	ASTM E-11-2013	Code CISA	ISO 3310.1	ASTM E-11-2013	Code CISA	ISO 3310.1	ASTM E-11-2013	Code CISA	ISO 3310.1	ASTM E-11-2013	Code CISA
20 µ	N° 635	1500601	160 µ		1504801	1,00 mm	N° 18	1509001	11.20 mm	7/16 in.	1514601
25 µ	N° 500	1500801	180 µ	N° 80	1505001	1,12 mm		1509201	12.50 mm	½ in.	1514801
32 µ	N° 450	1501001	200 µ		1505201	1,18 mm	N° 16	1509401	13.20 mm	0.530 in.	1515001
36 µ		1501201	212 µ	N° 70	1505401	1,25 mm		1509601	14.00 mm		1515201
38 µ	N° 400	1501401	224 µ		1505601	1,40 mm	N° 14	1509801	16.00 mm	5/8 in.	1515401
40 µ		1501601	250 µ	N° 60	1505801	1,60 mm		1510001	18.00 mm		1515601
45 µ	N° 325	1501801	280 µ		1506001	1,70 mm	N° 12	1510201	19.00 mm	3/4 in.	1515801
50 µ		1502001	300 µ	N° 50	1506201	1,80 mm		1510401	20.00 mm		1516001
53 µ	N° 270	1502201	315 µ		1506401	2,00 mm	N° 10	1510601	22.40 mm	7/8 in.	1516201
56 µ		1502401	355 µ	N° 45	1506601	2,24 mm		1510801	25.00 mm	1.00 in.	1516401
63 µ	N° 230	1502601	400 µ		1506801	2,36 mm	N° 8	1511001	26.50 mm	1.06 in.	1516601
71 µ		1502801	425 µ	N° 40	1507001	2,50 mm		1511201	28.00 mm		1516801
75 µ	N° 200	1503001	450 µ		1507201	2,80 mm	N° 7	1511401	31.50 mm	1 1/4 in.	1517001
80 µ		1503201	500 µ	N° 35	1507401	3,15 mm		1511601	35.50 mm		1517201
90 µ	N° 170	1503401	560 µ		1507601	3,35 mm	N° 6	1511801	37.50 mm	1 1/2 in.	1517401
100 µ		1503601	600 µ	N° 30	1507801	3,55 mm		1512001	40.00 mm		1517601
106 µ	N° 140	1503801	630 µ		1508001	4,00 mm	N° 5	1512201	45,00 mm	1 3/4 in.	1517801
112 µ		1504001	710 µ	N° 25	1508201	4.50 mm		1512401	50.00 mm	2.00 in.	1518001
125 µ	N° 120	1504201	800 µ		1508401	4.75 mm	N° 4	1512601	53.00 mm	2.12 in.	1518201
140 µ		1504401	850 µ	N° 20	1508601	5.00 mm		1512801	56.00 mm		1518401
150 µ	N° 100	1504601	900 µ		1508801	5.60 mm	N° 3½	1513001	63.00 mm	2 1/2 in.	1518601
						6.30 mm	¼ in.	1513201	71.00 mm		1518801
						6.70 mm	0.265 in.	1513401	75.00 mm	3.00 in.	1519001
						7.10 mm		1513601	80.00 mm		1519201
						8.00 mm	5/16 in.	1513801	90.00 mm	3 1/2 in.	1519401
						9.00 mm		1514001	100.00 mm	4.00 in.	1519601
						9.50 mm	3/8 in.	1514201	106.00 mm	4.24 in.	1519801
						10.00 mm		1514401	112.00 mm		1520001
									125.00 mm	5.00 in.	1520201

315

# 315 mm Ø x 80 mm H

STAINLESS STEEL FRAME



## SIEVES WITH PERFORATED PLATE

### 315.2 Square holes

### 315.3 Round holes

ISO 3310.2	ASTM E-323-2011	Code CISA	ISO 3310.2	ASTM E-323-2011	Code CISA	ISO 3310.2	ASTM E-323-2011	Code CISA	ISO 3310.2	ASTM E-323-2011	Code CISA
4,00 mm	5/32 in.	1512261	22.40 mm	7/8 in.	1516261	4,00 mm	5/32 in.	1512241	22.40 mm	7/8 in.	1516241
4.50 mm		1512461	25.00 mm	1.00 in.	1516461	4.50 mm		1512441	25.00 mm	1.00 in.	1516441
4.75 mm	3/16 in.	1512661	26.50 mm	11/18 in.	1516661	4.75 mm	3/16 in.	1512641	26.50 mm	11/18 in.	1516641
5.00 mm		1512861	28.00 mm		1516861	5.00 mm		1512841	28.00 mm		1516841
5.60 mm	7/32 in.	1513061	31.50 mm	1 1/4 in.	1517061	5.60 mm	7/32 in.	1513041	31.50 mm	1 1/4 in.	1517041
6.30 mm	¼ in.	1513261	35.50 mm		1517261	6.30 mm	¼ in.	1513241	35.50 mm		1517241
6.70 mm	17/64 in.	1513461	37.50 mm	1 1/2 in.	1517461	6.70 mm	17/64 in.	1513441	37.50 mm	1 1/2 in.	1517441
7.10 mm		1513661	40.00 mm		1517661	7.10 mm		1513641	40.00 mm		1517641
8.00 mm	5/16 in.	1513861	45,00 mm	13/4 in.	1517861	8.00 mm	5/16 in.	1513841	45,00 mm	13/4 in.	1517841
9.00 mm		1514061	50.00 mm	2.00 in.	1518061	9.00 mm		1514041	50.00 mm	2.00 in.	1518041
9.50 mm	3/8 in.	1514261	53.00 mm	2 1/8 in.	1518261	9.50 mm	3/8 in.	1514241	53.00 mm	2 1/8 in.	1518241
10.00 mm		1514461	56.00 mm		1518461	10.00 mm		1514441	56.00 mm		1518441
11.20 mm	7/16 in.	1514661	63.00 mm	2 1/2 in.	1518661	11.20 mm	7/16 in.	1514641	63.00 mm	2 1/2 in.	1518641
12.50 mm	½ in.	1514861	71.00 mm		1518861	12.50 mm	½ in.	1514841	71.00 mm		1518841
13.20 mm	0.530 in.	1515061	75.00 mm	3.00 in.	1519061	13.20 mm	0.530 in.	1515041	75.00 mm	3.00 in.	1519041
14.00 mm		1515261	80.00 mm		1519261	14.00 mm		1515241	80.00 mm		1519241
16.00 mm	5/8 in.	1515461	90.00 mm	3 1/2 in.	1519461	16.00 mm	5/8 in.	1515441	90.00 mm	3 1/2 in.	1519441
18.00 mm		1515661	100.00 mm	4.00 in.	1519661	18.00 mm		1515641	100.00 mm	4.00 in.	1519641
19.00 mm	3/4 in.	1515861	106.00 mm	4.24 in.	1519861	19.00 mm	3/4 in.	1515841	106.00 mm	4.24 in.	1519841
20.00 mm		1516061	112.00 mm		1520061	20.00 mm		1516041	112.00 mm		1520041
			125.00 mm	5.00 in.	1520261				125.00 mm	5.00 in.	1520241

## ACCESSORIES

Pan and Cover  
315 mm. Ø x 80 mm. H

Wet sieving  
pan and cover 315 mm. Ø

Cleaning kit

Calibration certificate  
with uncertainty value



NOVETAL SARL

1410, Chemin des Chaberts 83136 Garéoult France

Tel : + 33 (0) 4 94 86 47 09 - Email : [info@novetal.com](mailto:info@novetal.com) - Internet : [www.novetal.com](http://www.novetal.com)

TEST SIEVE  
**350 mm Ø**  
**60 mm H**

STAINLESS  
STEEL FRAME

**350**



**C I S a**   
SIEVING TECHNOLOGIES





350

# 350 mm Ø x 60 mm H

STAINLESS STEEL FRAME



Request  
Calibration Certificate  
Service sieve



For medium/coarse grain sizes.

Individual laser-engraved identification  
of each sieve to ensure traceability.

Includes certificate of attestation  
according to 2.1 EN 10204.

Mirror polishing.

Frame material: AISI-304

Screening surface: 900 cm<sup>2</sup>.


**Weight:** From 1150 grams to 2000 grams  
depending on the mesh opening.



## CONFIGURATIONS

1. Sieves with metal mesh according to ISO 3310.1 - ASTM E-11 - NF X11-504.
2. Sieves with perforated plate, standards ISO 3310.2 - ASTM E-323.

## INCLUDED

-  Test certificate according to standard 2.1.EN 10204.

## ACCESSORIES

- Pan 350mm.Ø stainless steel (code 3200001).
- Cover 350mm.Ø stainless steel. (code 3200002).

## OPTIONS

- Calibration certificate with uncertainty value.
- AISI-316 stainless steel frame.

350

# 350 mm Ø x 60 mm H

STAINLESS STEEL FRAME



## 350.1 WIRE MESH SIEVES

ISO 3310.1	ASTM E-11-2013	Code CISA	ISO 3310.1	ASTM E-11-2013	Code CISA	ISO 3310.1	ASTM E-11-2013	Code CISA	ISO 3310.1	ASTM E-11-2013	Code CISA
20 µ	N° 635	3200601	160 µ		3204801	1,00 mm	N° 18	3209001	11.20 mm	7/16 in.	3214601
25 µ	N° 500	3200801	180 µ	N° 80	3205001	1,12 mm		3209201	12.50 mm	½ in.	3214801
32 µ	N° 450	3201001	200 µ		3205201	1,18 mm	N° 16	3209401	13.20 mm	0.530 in.	3215001
36 µ		3201201	212 µ	N° 70	3205401	1,25 mm		3209601	14.00 mm		3215201
38 µ	N° 400	3201401	224 µ		3205601	1,40 mm	N° 14	3209801	16.00 mm	5/8 in.	3215401
40 µ		3201601	250 µ	N° 60	3205801	1,60 mm		3210001	18.00 mm		3215601
45 µ	N° 325	3201801	280 µ		3206001	1,70 mm	N° 12	3210201	19.00 mm	3/4 in.	3215801
50 µ		3202001	300 µ	N° 50	3206201	1,80 mm		3210401	20.00 mm		3216001
53 µ	N° 270	3202201	315 µ		3206401	2,00 mm	N° 10	3210601	22.40 mm	7/8 in.	3216201
56 µ		3202401	355 µ	N° 45	3206601	2,24 mm		3210801	25.00 mm	1.00 in.	3216401
63 µ	N° 230	3202601	400 µ		3206801	2,36 mm	N° 8	3211001	26.50 mm	1.06 in.	3216601
71 µ		3202801	425 µ	N° 40	3207001	2,50 mm		3211201	28.00 mm		3216801
75 µ	N° 200	3203001	450 µ		3207201	2,80 mm	N° 7	3211401	31.50 mm	1 1/4 in.	3217001
80 µ		3203201	500 µ	N° 35	3207401	3,15 mm		3211601	35.50 mm		3217201
90 µ	N° 170	3203401	560 µ		3207601	3,35 mm	N° 6	3211801	37.50 mm	1 1/2 in.	3217401
100 µ		3203601	600 µ	N° 30	3207801	3,55 mm		3212001	40.00 mm		3217601
106 µ	N° 140	3203801	630 µ		3208001	4,00 mm	N° 5	3212201	45,00 mm	1 3/4 in.	3217801
112 µ		3204001	710 µ	N° 25	3208201	4.50 mm		3212401	50.00 mm	2.00 in.	3218001
125 µ	N° 120	3204201	800 µ		3208401	4.75 mm	N° 4	3212601	53.00 mm	2.12 in.	3218201
140 µ		3204401	850 µ	N° 20	3208601	5.00 mm		3212801	56.00 mm		3218401
150 µ	N° 100	3204601	900 µ		3208801	5.60 mm	N° 3½	3213001	63.00 mm	2 1/2 in.	3218601
						6.30 mm	¼ in.	3213201	71.00 mm		3218801
						6.70 mm	0.265 in.	3213401	75.00 mm	3.00 in.	3219001
						7.10 mm		3213601	80.00 mm		3219201
						8.00 mm	5/16 in.	3213801	90.00 mm	3 1/2 in.	3219401
						9.00 mm		3214001	100.00 mm	4.00 in.	3219601
						9.50 mm	3/8 in.	3214201	106.00 mm	4.24 in.	3219801
						10.00 mm		3214401	112.00 mm		3220001
									125.00 mm	5.00 in.	3220201

350

# 350 mm Ø x 60 mm H

STAINLESS STEEL FRAME



## SIEVES WITH PERFORATED PLATE

### 350.2 Square hole

ISO 3310.2	ASTM E-323-2011	Code CISA	ISO 3310.2	ASTM E-323-2011	Code CISA
4,00 mm	5/32 in.	3212261	22.40 mm	7/8 in.	3216261
4.50 mm		3212461	25.00 mm	1.00 in.	3216461
4.75 mm	3/16 in.	3212661	26.50 mm	11/18 in.	3216661
5.00 mm		3212861	28.00 mm		3216861
5.60 mm	7/32 in.	3213061	31.50 mm	1 1/4 in.	3217061
6.30 mm	¼ in.	3213261	35.50 mm		3217261
6.70 mm	17/64 in.	3213461	37.50 mm	1 1/2 in.	3217461
7.10 mm		3213661	40.00 mm		3217661
8.00 mm	5/16 in.	3213861	45,00 mm	1 3/4 in.	3217861
9.00 mm		3214061	50.00 mm	2.00 in.	3218061
9.50 mm	3/8 in.	3214261	53.00 mm	2 1/8 in.	3218261
10.00 mm		3214461	56.00 mm		3218461
11.20 mm	7/16 in.	3214661	63.00 mm	2 1/2 in.	3218661
12.50 mm	½ in.	3214861	71.00 mm		3218861
13.20 mm	0.530 in.	3215061	75.00 mm	3.00 in.	3219061
14.00 mm		3215261	80.00 mm		3219261
16.00 mm	5/8 in.	3215461	90.00 mm	3 1/2 in.	3219461
18.00 mm		3215661	100.00 mm	4.00 in.	3219661
19.00 mm	3/4 in.	3215861	106.00 mm	4.24 in.	3219861
20.00 mm		3216061	112.00 mm		3220061
			125.00 mm	5.00 in.	3220261

### 350.3 Round hole

ISO 3310.2	ASTM E-323-2011	Code CISA	ISO 3310.2	ASTM E-323-2011	Code CISA
4,00 mm	5/32 in.	3212241	22.40 mm	7/8 in.	3216241
4.50 mm		3212441	25.00 mm	1.00 in.	3216441
4.75 mm	3/16 in.	3212641	26.50 mm	11/18 in.	3216641
5.00 mm		3212841	28.00 mm		3216841
5.60 mm	7/32 in.	3213041	31.50 mm	1 1/4 in.	3217041
6.30 mm	¼ in.	3213241	35.50 mm		3217241
6.70 mm	17/64 in.	3213441	37.50 mm	1 1/2 in.	3217441
7.10 mm		3213641	40.00 mm		3217641
8.00 mm	5/16 in.	3213841	45,00 mm	1 3/4 in.	3217841
9.00 mm		3214041	50.00 mm	2.00 in.	3218041
9.50 mm	3/8 in.	3214241	53.00 mm	2 1/8 in.	3218241
10.00 mm		3214441	56.00 mm		3218441
11.20 mm	7/16 in.	3214641	63.00 mm	2 1/2 in.	3218641
12.50 mm	½ in.	3214841	71.00 mm		3218841
13.20 mm	0.530 in.	3215041	75.00 mm	3.00 in.	3219041
14.00 mm		3215241	80.00 mm		3219241
16.00 mm	5/8 in.	3215441	90.00 mm	3 1/2 in.	3219441
18.00 mm		3215641	100.00 mm	4.00 in.	3219641
19.00 mm	3/4 in.	3215841	106.00 mm	4.24 in.	3219841
20.00 mm		3216041	112.00 mm		3220041
			125.00 mm	5.00 in.	3220241

## ACCESSORIES

Pan and cover  
350 mm. Ø x 60 mm. H

Wet sieving  
pan and cover 350 mm. Ø

Cleaning kit

Calibration certificate  
with uncertainty value.



NOVETAL SARL

1410, Chemin des Chaberts 83136 Garéoult France

Tel : + 33 (0) 4 94 86 47 09 - Email : [info@novetal.com](mailto:info@novetal.com) - Internet : [www.novetal.com](http://www.novetal.com)



TEST SIEVE

**400mm Ø**  
**65mm H**

STAINLESS  
STEEL FRAME

**400**



**C I S a**   
SIEVING TECHNOLOGIES



400

# 400mm Ø x 65mm H

STAINLESS STEEL FRAME



Request  
Calibration Certificate  
Service sieve



For coarse particle size testing.

Individual laser-engraved identification of each sieve to ensure traceability.

Includes certificate of attestation according to 2.1 EN 10204.

Optional calibration certificate with uncertainty value

Mirror polishing.

Frame material: AISI-316

Screening surface: 1200 cm<sup>2</sup>.

**Weight of the sieves:** From 1550 grams to 2200 grams, depending on the opening



## AVAILABLE CONFIGURATIONS

3. Sieves with metal mesh according to ISO 3310.1 - ASTM E-11 - NF X11-504
4. Sieves with square and round perforated plate, standards ISO 3310.2 - ASTM E-323.

## INCLUDED

- ✓ Test certificate according to standard 2.1 EN 10204.

## ACCESSORIES

- Pan 400mm Ø stainless steel (code 1600001).
- Cover 400mm Ø stainless steel (code 1600002).

## OPTIONS

- Calibration certificate with uncertainty value.
- Placement of reinforcement mesh for openings smaller than 100µ.

400

# 400mm Ø x 65mm H

STAINLESS STEEL FRAME



## 400.3 WIRE MESH SIEVES

ISO 3310.1	ASTM E-11-2013	Code CISA		ISO 3310.1	ASTM E-11-2013	Code CISA		ISO 3310.1	ASTM E-11-2013	Code CISA
20 µ	N° 635	2400601	●	1,00 mm	N° 18	2409001	●	11,20 mm	7/16in	2414601
25 µ	N° 500	2400801	●	1,12 mm		2409201	●	12,50 mm	1/2in	2414801
32 µ	N° 450	2401001	●	1,18 mm	N° 16	2409401	●	13,20 mm	0.530in	2415001
36 µ		2401201	●	1,25 mm		2409601	●	14,00 mm		2415201
38 µ	N° 400	2401401	●	1,40 mm	N° 14	2409801	●	16,00 mm	5/8in	2415401
40 µ		2401601	●	1,60 mm		2410001	●	18,00 mm		2415601
45 µ	N° 325	2401801	●	1,70 mm	N° 12	2410201	●	19,00 mm	3/4in	2415801
50 µ		2402001	●	1,80 mm		2410401	●	20,00 mm		2416001
53 µ	N° 270	2402201	●	2,00 mm	N° 10	2410601	●	22,40 mm	7/8in	2416201
56 µ		2402401	●	2,24 mm		2410801	●	25,00 mm	1.00in	2416401
63 µ	N° 230	2402601	●	2,36 mm	N° 8	2411001	●	26,50 mm	1.06in	2416601
71 µ		2402801	●	2,50 mm		2411201	●	28,00 mm		2416801
75 µ	N° 200	2403001	●	2,80 mm	N° 7	2411401	●	31,50 mm	1 1/4in	2417001
80 µ		2403201	●	3,15 mm		2411601	●	35,50 mm		2417201
90 µ	N° 170	2403401	●	3,35 mm	N° 6	2411801	●	37,50 mm	1 1/2in	2417401
100 µ		2403601	●	3,55 mm		2412001	●	40,00 mm		2417601
106 µ	N° 140	2403801	●	4,00 mm	N° 5	2412201	●	45,00 mm	1 3/4in	2417801
112 µ		2404001	●	4,50 mm		2412401	●	50,00 mm	2.00in	2418001
125 µ	N° 120	2404201	●	4,75 mm	N° 4	2412601	●	53,00 mm	2.12in	2418201
140 µ		2404401	●	5,00 mm		2412801	●	56,00 mm		2418401
150 µ	N° 100	2404601	●	5,60 mm	N° 3½	2413001	●	63,00 mm	2 1/2in	2418601
160 µ		2404801	●	6,30 mm	1/4in	2413201	●	71,00 mm		2418801
180 µ	N° 80	2405001	●	6,70 mm	0.265 in	2413401	●	75,00 mm	3.00in	2419001
200 µ		2405201	●	7,10 mm		2413601	●	80,00 mm		2419201
212 µ	N° 70	2405401	●	8,00 mm	5/16in	2413801	●	90,00 mm	3 1/2in	2419401
224 µ		2405601	●	9,00 mm		2414001	●	100,00 mm	4.00in	2419601
250 µ	N° 60	2405801	●	9,50 mm	3/8in	2414201	●	106,00 mm	4.24in	2419801
280 µ		2406001	●	10,00 mm		2414401	●	112,00 mm		2420001
300 µ	N° 50	2406201	●				●	125,00 mm	5.00in	2420201
315 µ		2406401	●				●			
355 µ	N° 45	2406601	●				●			
400 µ		2406801	●				●			
425 µ	N° 40	2407001	●				●			
450 µ		2407201	●				●			
500 µ	N° 35	2407401	●				●			
560 µ		2407601	●				●			
600 µ	N° 30	2407801	●				●			
630 µ		2408001	●				●			
710 µ	N° 25	2408201	●				●			
800 µ		2408401	●				●			
850 µ	N° 20	2408601	●				●			
900 µ		2408801	●				●			



400

# 400mm Ø x 65mm H

STAINLESS STEEL FRAME



## SIEVES WITH PERFORATED PLATE

### 400.4 Square hole

### 400.5 Round hole

ISO 3310.2	ASTM E-323-2011	Code CISA	ISO 3310.2	ASTM E-323-2011	Code CISA	ISO 3310.2	ASTM E-323-2011	Code CISA	ISO 3310.2	ASTM E-323-2011	Code CISA
4,00 mm	5/32"	2412261	22,40 mm	7/8"	2416261	4,00 mm	5/32"	2412241	22,40 mm	7/8"	2416241
4,50 mm		2412461	25,00 mm	1.00"	2416461	4,50 mm		2412441	25,00 mm	1.00"	2416441
4,75 mm	3/16"	2412661	26,50 mm	1 1/18"	2416661	4,75 mm	3/16"	2412641	26,50 mm	1 1/18"	2416641
5,00 mm		2412861	28,00 mm		2416861	5,00 mm		2412841	28,00 mm		2416841
5,60 mm	7/32"	2413061	31,50 mm	1 ¼"	2417061	5,60 mm	7/32"	2413041	31,50 mm	1 ¼"	2417041
6,30 mm	¼"	2413261	35,50 mm		2417261	6,30 mm	¼"	2413241	35,50 mm		2417241
6,70 mm	17/64"	2413461	37,50 mm	1 ½"	2417461	6,70 mm	17/64"	2413441	37,50 mm	1 ½"	2417441
7,10 mm		2413661	40,00 mm		2417661	7,10 mm		2413641	40,00 mm		2417641
8,00 mm	5/16"	2413861	45,00 mm	1 ¾"	2417861	8,00 mm	5/16"	2413841	45,00 mm	1 ¾"	2417841
9,00 mm		2414061	50,00 mm	2.00"	2418061	9,00 mm		2414041	50,00 mm	2.00"	2418041
9,50 mm	3/8"	2414261	53,00 mm	2 1/8"	2418261	9,50 mm	3/8"	2414241	53,00 mm	2 1/8"	2418241
10,00 mm		2414461	56,00 mm		2418461	10,00 mm		2414441	56,00 mm		2418441
11,20 mm	7/16"	2414661	63,00 mm	2 ½"	2418661	11,20 mm	7/16"	2414641	63,00 mm	2 ½"	2418641
12,50 mm	½"	2414861	71,00 mm		2418861	12,50 mm	½"	2414841	71,00 mm		2418841
13,20 mm	17/32"	2415061	75,00 mm	3.00"	2419061	13,20 mm	17/32"	2415041	75,00 mm	3.00"	2419041
14,00 mm		2415261	80,00 mm		2419261	14,00 mm		2415241	80,00 mm		2419241
16,00 mm	5/8"	2415461	90,00 mm	3 ½"	2419461	16,00 mm	5/8"	2415441	90,00 mm	3 ½"	2419441
18,00 mm		2415661	100,00 mm	4.00"	2419661	18,00 mm		2415641	100,00 mm	4.00"	2419641
19,00 mm	¾"	2415861	106,00 mm	4 ¼"	2419861	19,00 mm	¾"	2415841	106,00 mm	4 ¼"	2419841
20,00 mm		2416061	112,00 mm		2420061	20,00 mm		2416041	112,00 mm		2420041
			125,00 mm	5.00"	2420261				125,00 mm	5.00"	2420241

## ACCESSORIES

Pan and cover  
400 mm.Ø

Wet sieving  
pan and cover 400 mm. Ø

Cleaning kit

Calibration certificate according to  
ASTM E-11, AFNOR NF X-11-504, BS  
410 or ISO 3310 standards.



NOVETAL SARL

1410, Chemin des Chaberts 83136 Garéoult France

Tel : + 33 (0) 4 94 86 47 09 - Email : [info@novetal.com](mailto:info@novetal.com) - Internet : [www.novetal.com](http://www.novetal.com)

TEST SIEVE

**400mm Ø**  
**100mm H**

STAINLESS  
STEEL FRAME

**400**



**C I S a**   
SIEVING TECHNOLOGIES



400

# 400mm Ø x 100mm H

STAINLESS STEEL FRAME



Request  
Calibration Certificate  
Service sieve



For coarse particle size testing.

Individual laser-engraved identification  
of each sieve to ensure traceability.

Includes certificate of attestation  
according to 2.1 EN 10204.

Optional calibration certificate with  
uncertainty value

Mirror polishing.

Frame material: AISI-316

Screening surface: 1200 cm<sup>2</sup>.

**Weight of the sieves:** From 1750 grams to  
2400 grams, depending on the opening.



## AVAILABLE CONFIGURATIONS

1. Sieves with metal mesh according to ISO 3310.1 - ASTM E-11 - NF X11-504.
2. Sieves with square and round perforated plate, standards ISO 3310.2 - ASTM E-323.

## INCLUDED

- ✓ Test certificate according to standard 2.1 EN 10204.

## ACCESSORIES

- Pan 400mm Ø stainless steel (code 1600001).
- Cover 400mm Ø stainless steel (code 1600002).

## OPTIONS

- Calibration certificate according to ASTM E-11, AFNOR NF X-11-504, BS 410 or ISO 3310 standards.
- Placement of reinforcement mesh for openings smaller than 100µ.



400

# 400mm Ø x 100mm H

STAINLESS STEEL FRAME



## 400.1 WIRE MESH SIEVES

ISO 3310.1	ASTM E-11-2013	Code CISA		ISO 3310.1	ASTM E-11-2013	Code CISA		ISO 3310.1	ASTM E-11-2013	Code CISA
20 µ	N° 635	1800601	•	1,00 mm	N° 18	1809001	•	11,20 mm	7/16in	1814601
25 µ	N° 500	1800801	•	1,12 mm		1809201	•	12,50 mm	1/2in	1814801
32 µ	N° 450	1801001	•	1,18 mm	N° 16	1809401	•	13,20 mm	0.530in	1815001
36 µ		1801201	•	1,25 mm		1809601	•	14,00 mm		1815201
38 µ	N° 400	1801401	•	1,40 mm	N° 14	1809801	•	16,00 mm	5/8in	1815401
40 µ		1801601	•	1,60 mm		1810001	•	18,00 mm		1815601
45 µ	N° 325	1801801	•	1,70 mm	N° 12	1810201	•	19,00 mm	3/4in	1815801
50 µ		1802001	•	1,80 mm		1810401	•	20,00 mm		1816001
53 µ	N° 270	1802201	•	2,00 mm	N° 10	1810601	•	22,40 mm	7/8in	1816201
56 µ		1802401	•	2,24 mm		1810801	•	25,00 mm	1.00in	1816401
63 µ	N° 230	1802601	•	2,36 mm	N° 8	1811001	•	26,50 mm	1.06in	1816601
71 µ		1802801	•	2,50 mm		1811201	•	28,00 mm		1816801
75 µ	N° 200	1803001	•	2,80 mm	N° 7	1811401	•	31,50 mm	1 1/4in	1817001
80 µ		1803201	•	3,15 mm		1811601	•	35,50 mm		1817201
90 µ	N° 170	1803401	•	3,35 mm	N° 6	1811801	•	37,50 mm	1 1/2in	1817401
100 µ		1803601	•	3,55 mm		1812001	•	40,00 mm		1817601
106 µ	N° 140	1803801	•	4,00 mm	N° 5	1812201	•	45,00 mm	1 3/4in	1817801
112 µ		1804001	•	4,50 mm		1812401	•	50,00 mm	2.00in	1818001
125 µ	N° 120	1804201	•	4,75 mm	N° 4	1812601	•	53,00 mm	2.12in	1818201
140 µ		1804401	•	5,00 mm		1812801	•	56,00 mm		1818401
150 µ	N° 100	1804601	•	5,60 mm	N° 3½	1813001	•	63,00 mm	2 1/2in	1818601
160 µ		1804801	•	6,30 mm	1/4in	1813201	•	71,00 mm		1818801
180 µ	N° 80	1805001	•	6,70 mm	0.265 in	1813401	•	75,00 mm	3.00in	1819001
200 µ		1805201	•	7,10 mm		1813601	•	80,00 mm		1819201
212 µ	N° 70	1805401	•	8,00 mm	5/16in	1813801	•	90,00 mm	3 1/2in	1819401
224 µ		1805601	•	9,00 mm		1814001	•	100,00 mm	4.00in	1819601
250 µ	N° 60	1805801	•	9,50 mm	3/8in	1814201	•	106,00 mm	4.24in	1819801
280 µ		1806001	•	10,00 mm		1814401	•	112,00 mm		1820001
300 µ	N° 50	1806201	•				•	125,00 mm	5.00in	1820201
315 µ		1806401	•							
355 µ	N° 45	1806601	•							
400 µ		1806801	•							
425 µ	N° 40	1807001	•							
450 µ		1807201	•							
500 µ	N° 35	1807401	•							
560 µ		1807601	•							
600 µ	N° 30	1807801	•							
630 µ		1808001	•							
710 µ	N° 25	1808201	•							
800 µ		1808401	•							
850 µ	N° 20	1808601	•							
900 µ		1808801	•							

400

# 400mm Ø x 100mm H

STAINLESS STEEL FRAME



## SIEVES WITH PERFORATED PLATE

### 400.2 Square hole

### 400.6 Round hole

ISO 3310.2	ASTM E-323-2011	Code CISA	ISO 3310.2	ASTM E-323-2011	Code CISA	ISO 3310.2	ASTM E-323-2011	Code CISA	ISO 3310.2	ASTM E-323-2011	Code CISA
4,00 mm	5/32"	1812261	22,40 mm	7/8"	1816261	3,15 mm		1811641	22,40 mm	7/8"	1816241
4,50 mm		1812461	25,00 mm	1.00"	1816461	4,00 mm	5/32"	1812241	25,00 mm	1.00"	1816441
4,75 mm	3/16"	1812661	26,50 mm	1 1/18"	1816661	4,50 mm		1812441	26,50 mm	1 1/18"	1816641
5,00 mm		1812861	28,00 mm		1816861	4,75 mm	3/16"	1812641	28,00 mm		1816841
5,60 mm	7/32"	1813061	31,50 mm	1 ¼"	1817061	5,00 mm		1812841	31,50 mm	1 ¼"	1817041
6,30 mm	¼"	1813261	35,50 mm		1817261	5,60 mm	7/32"	1813041	35,50 mm		1817241
6,70 mm	17/64"	1813461	37,50 mm	1 ½"	1817461	6,30 mm	¼"	1813241	37,50 mm	1 ½"	1817441
7,10 mm		1813661	40,00 mm		1817661	6,70 mm	17/64"	1813441	40,00 mm		1817641
8,00 mm	5/16"	1813861	45,00 mm	1 ¾"	1817861	7,10 mm		1813641	45,00 mm	1 ¾"	1817841
9,00 mm		1814061	50,00 mm	2.00"	1818061	8,00 mm	5/16"	1813841	50,00 mm	2.00"	1818041
9,50 mm	3/8"	1814261	53,00 mm	2 1/8"	1818261	9,00 mm		1814041	53,00 mm	2 1/8"	1818241
10,00 mm		1814461	56,00 mm		1818461	9,50 mm	3/8"	1814241	56,00 mm		1818441
11,20 mm	7/16"	1814661	63,00 mm	2 ½"	1818661	10,00 mm		1814441	63,00 mm	2 ½"	1818641
12,50 mm	½"	1814861	71,00 mm		1818861	11,20 mm	7/16"	1814641	71,00 mm		1818841
13,20 mm	17/32"	1815061	75,00 mm	3.00"	1819061	12,50 mm	½"	1814841	75,00 mm	3.00"	1819041
14,00 mm		1815261	80,00 mm		1819261	13,20 mm	17/32"	1815041	80,00 mm		1819241
16,00 mm	5/8"	1815461	90,00 mm	3 ½"	1819461	14,00 mm		1815241	90,00 mm	3 ½"	1819441
18,00 mm		1815661	100,00 mm	4.00"	1819661	16,00 mm	5/8"	1815441	100,00 mm	4.00"	1819641
19,00 mm	¾"	1815861	106,00 mm	4 ¼"	1819861	18,00 mm		1815641	106,00 mm	4 ¼"	1819841
20,00 mm		1816061	112,00 mm		1820061	19,00 mm	¾"	1815841	112,00 mm		1820041
			125,00 mm	5.00"	1820261	20,00 mm		1816041	125,00 mm	5.00"	1820241

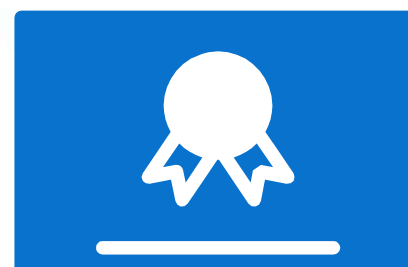
## ACCESSORIES

Pan and cover  
400 mm.Ø

Wet sieving  
pan and cover 400 mm. Ø

Cleaning kit

Calibration certificate according to  
ASTM E-11, AFNOR NF X-11-504, BS  
410 or ISO 3310 standards.



NOVETAL SARL

1410, Chemin des Chaberts 83136 Garéoult France

Tel : + 33 (0) 4 94 86 47 09 - Email : [info@novetal.com](mailto:info@novetal.com) - Internet : [www.novetal.com](http://www.novetal.com)

TEST SIEVE

**450mm Ø**  
**100mm H**

STAINLESS  
STEEL FRAME

**450**



**C I S a**   
SIEVING TECHNOLOGIES





450

# 450mm Ø x 100mm H

STAINLESS STEEL FRAME



Request  
Calibration Certificate  
Service sieve



For particle size testing and coarse particle separation.

Individual laser-engraved identification of each sieve to ensure traceability.

Includes certificate of attestation according to 2.1 EN 10204.

Optional calibration certificate with uncertainty value.

Mirror polishing.

Frame material: AISI-316


Screening surface: 1520 cm<sup>2</sup>.



## AVAILABLE CONFIGURATIONS

1. Sieves with metal mesh according to ISO 3310.1 - ASTM E-11 - NF X11-504
2. Sieves with square and round perforated plate, standards ISO 3310.2 - ASTM E-323.

## INCLUDED

-  Test certificate according to standard 2.1 EN 10204.

## ACCESSORIES

- Pan 450mm Ø stainless steel (code 1900001).
- Cover 450mm Ø stainless steel (code 1900002).

## OPTIONS

- Calibration certificate with uncertainty value.
- Placement of reinforcement mesh for openings smaller than 100µ.

450

# 450mm Ø x 100mm H

STAINLESS STEEL FRAME



## 450.1 WIRE MESH SIEVES

ISO 3310.1	ASTM E-11-2013	Code CISA		ISO 3310.1	ASTM E-11-2013	Code CISA		ISO 3310.1	ASTM E-11-2013	Code CISA
20 µ	N° 635	1900601	●	1,00 mm	N° 18	1909001	●	11,20 mm	7/16in	1914601
25 µ	N° 500	1900801	●	1,12 mm		1909201	●	12,50 mm	1/2in	1914801
32 µ	N° 450	1901001	●	1,18 mm	N° 16	1909401	●	13,20 mm	0.530in	1915001
36 µ		1901201	●	1,25 mm		1909601	●	14,00 mm		1915201
38 µ	N° 400	1901401	●	1,40 mm	N° 14	1909801	●	16,00 mm	5/8in	1915401
40 µ		1901601	●	1,60 mm		1910001	●	18,00 mm		1915601
45 µ	N° 325	1901801	●	1,70 mm	N° 12	1910201	●	19,00 mm	3/4in	1915801
50 µ		1902001	●	1,80 mm		1910401	●	20,00 mm		1916001
53 µ	N° 270	1902201	●	2,00 mm	N° 10	1910601	●	22,40 mm	7/8in	1916201
56 µ		1902401	●	2,24 mm		1910801	●	25,00 mm	1.00in	1916401
63 µ	N° 230	1902601	●	2,36 mm	N° 8	1911001	●	26,50 mm	1.06in	1916601
71 µ		1902801	●	2,50 mm		1911201	●	28,00 mm		1916801
75 µ	N° 200	1903001	●	2,80 mm	N° 7	1911401	●	31,50 mm	1 1/4in	1917001
80 µ		1903201	●	3,15 mm		1911601	●	35,50 mm		1917201
90 µ	N° 170	1903401	●	3,35 mm	N° 6	1911801	●	37,50 mm	1 1/2in	1917401
100 µ		1903601	●	3,55 mm		1912001	●	40,00 mm		1917601
106 µ	N° 140	1903801	●	4,00 mm	N° 5	1912201	●	45,00 mm	1 3/4in	1917801
112 µ		1904001	●	4,50 mm		1912401	●	50,00 mm	2.00in	1918001
125 µ	N° 120	1904201	●	4,75 mm	N° 4	1912601	●	53,00 mm	2.12in	1918201
140 µ		1904401	●	5,00 mm		1912801	●	56,00 mm		1918401
150 µ	N° 100	1904601	●	5,60 mm	N° 3½	1913001	●	63,00 mm	2 1/2in	1918601
160 µ		1904801	●	6,30 mm	1/4in	1913201	●	71,00 mm		1918801
180 µ	N° 80	1905001	●	6,70 mm	0.265 in	1913401	●	75,00 mm	3.00in	1919001
200 µ		1905201	●	7,10 mm		1913601	●	80,00 mm		1919201
212 µ	N° 70	1905401	●	8,00 mm	5/16in	1913801	●	90,00 mm	3 1/2in	1919401
224 µ		1905601	●	9,00 mm		1914001	●	100,00 mm	4.00in	1919601
250 µ	N° 60	1905801	●	9,50 mm	3/8in	1914201	●	106,00 mm	4.24in	1919801
280 µ		1906001	●	10,00 mm		1914401	●	112,00 mm		1920001
300 µ	N° 50	1906201	●				●	125,00 mm	5.00in	1920201
315 µ		1906401	●				●			
355 µ	N° 45	1906601	●				●			
400 µ		1906801	●				●			
425 µ	N° 40	1907001	●				●			
450 µ		1907201	●				●			
500 µ	N° 35	1907401	●				●			
560 µ		1907601	●				●			
600 µ	N° 30	1907801	●				●			
630 µ		1908001	●				●			
710 µ	N° 25	1908201	●				●			
800 µ		1908401	●				●			
850 µ	N° 20	1908601	●				●			
900 µ		1908801	●				●			

450

# 450mm Ø x 100mm H

STAINLESS STEEL FRAME



## SIEVES WITH PERFORATED PLATE

### 450.2 Square hole

### 450.3 Round hole

ISO 3310.2	ASTM E-323-2011	Code CISA	ISO 3310.2	ASTM E-323-2011	Code CISA	ISO 3310.2	ASTM E-323-2011	Code CISA	ISO 3310.2	ASTM E-323-2011	Code CISA
4,00 mm	5/32"	1912261	22,40 mm	7/8"	1916261	4,00 mm	5/32"	1912241	22,40 mm	7/8"	1916241
4,50 mm		1912461	25,00 mm	1.00"	1916461	4,50 mm		1912441	25,00 mm	1.00"	1916441
4,75 mm	3/16"	1912661	26,50 mm	1 1/18"	1916661	4,75 mm	3/16"	1912641	26,50 mm	1 1/18"	1916641
5,00 mm		1912861	28,00 mm		1916861	5,00 mm		1912841	28,00 mm		1916841
5,60 mm	7/32"	1913061	31,50 mm	1 ¼"	1917061	5,60 mm	7/32"	1913041	31,50 mm	1 ¼"	1917041
6,30 mm	¼"	1913261	35,50 mm		1917261	6,30 mm	¼"	1913241	35,50 mm		1917241
6,70 mm	17/64"	1913461	37,50 mm	1 ½"	1917461	6,70 mm	17/64"	1913441	37,50 mm	1 ½"	1917441
7,10 mm		1913661	40,00 mm		1917661	7,10 mm		1913641	40,00 mm		1917641
8,00 mm	5/16"	1913861	45,00 mm	1 ¾"	1917861	8,00 mm	5/16"	1913841	45,00 mm	1 ¾"	1917841
9,00 mm		1914061	50,00 mm	2.00"	1918061	9,00 mm		1914041	50,00 mm	2.00"	1918041
9,50 mm	3/8"	1914261	53,00 mm	2 1/8"	1918261	9,50 mm	3/8"	1914241	53,00 mm	2 1/8"	1918241
10,00 mm		1914461	56,00 mm		1918461	10,00 mm		1914441	56,00 mm		1918441
11,20 mm	7/16"	1914661	63,00 mm	2 ½"	1918661	11,20 mm	7/16"	1914641	63,00 mm	2 ½"	1918641
12,50 mm	½"	1914861	71,00 mm		1918861	12,50 mm	½"	1914841	71,00 mm		1918841
13,20 mm	17/32"	1915061	75,00 mm	3.00"	1919061	13,20 mm	17/32"	1915041	75,00 mm	3.00"	1919041
14,00 mm		1915261	80,00 mm		1919261	14,00 mm		1915241	80,00 mm		1919241
16,00 mm	5/8"	1915461	90,00 mm	3 ½"	1919461	16,00 mm	5/8"	1915441	90,00 mm	3 ½"	1919441
18,00 mm		1915661	100,00 mm	4.00"	1919661	18,00 mm		1915641	100,00 mm	4.00"	1919641
19,00 mm	¾"	1915861	106,00 mm	4 ¼"	1919861	19,00 mm	¾"	1915841	106,00 mm	4 ¼"	1919841
20,00 mm		1916061	112,00 mm		1920061	20,00 mm		1916041	112,00 mm		1920041
			125,00 mm	5.00"	1920261				125,00 mm	5.00"	1920241

## ACCESSORIES

Pan and cover  
450 mm. Ø

Wet sieving  
pan and cover 450 mm. Ø

Cleaning kit

Calibration certificate  
with uncertainty value.



NOVETAL SARL

1410, Chemin des Chaberts 83136 Garéoult France

Tel : + 33 (0) 4 94 86 47 09 - Email : [info@novetal.com](mailto:info@novetal.com) - Internet : [www.novetal.com](http://www.novetal.com)



TEST SIEVE

**500mm Ø**  
**100mm H**

STAINLESS  
STEEL FRAME

**500**



**C I S a**   
SIEVING TECHNOLOGIES



500

# 500mm Ø x 100mm H

STAINLESS STEEL FRAME



Request  
Calibration Certificate  
Service sieve



For coarse particles.

Individual laser-engraved identification of each sieve to ensure traceability.

Includes certificate of attestation according to 2.1 EN 10204.

Optional calibration certificate with uncertainty value.

Mirror polishing.

Frame material: AISI-316

Screening surface: 1900 cm<sup>2</sup>.



## AVAILABLE CONFIGURATIONS

1. Sieves with metal mesh according to ISO 3310.1 - ASTM E-11 - NF X11-504
2. Sieves with square and round perforated plate, standards ISO 3310.2 - ASTM E-323.

## INCLUDED

-  Test certificate according to standard 2.1.EN 10204.

## ACCESSORIES

- Pan 500mm Ø stainless steel (code 2000001).
- Cover 500mm Ø stainless steel (code 2000002).

## OPTIONS

- Calibration certificate with uncertainty value..
- Placement of reinforcement mesh for openings smaller than 100µ.

500

# 500mm Ø x 100mm H

STAINLESS STEEL FRAME



## 500.1 WIRE MESH SIEVES

ISO 3310.1	ASTM E-11-2013	Code CISA		ISO 3310.1	ASTM E-11-2013	Code CISA		ISO 3310.1	ASTM E-11-2013	Code CISA
20 µ	N° 635	2000601	●	1,00 mm	N° 18	2009001	●	11,20 mm	7/16in	2014601
25 µ	N° 500	2000801	●	1,12 mm		2009201	●	12,50 mm	1/2in	2014801
32 µ	N° 450	2001001	●	1,18 mm	N° 16	2009401	●	13,20 mm	0.530in	2015001
36 µ		2001201	●	1,25 mm		2009601	●	14,00 mm		2015201
38 µ	N° 400	2001401	●	1,40 mm	N° 14	2009801	●	16,00 mm	5/8in	2015401
40 µ		2001601	●	1,60 mm		2010001	●	18,00 mm		2015601
45 µ	N° 325	2001801	●	1,70 mm	N° 12	2010201	●	19,00 mm	3/4in	2015801
50 µ		2002001	●	1,80 mm		2010401	●	20,00 mm		2016001
53 µ	N° 270	2002201	●	2,00 mm	N° 10	2010601	●	22,40 mm	7/8in	2016201
56 µ		2002401	●	2,24 mm		2010801	●	25,00 mm	1.00in	2016401
63 µ	N° 230	2002601	●	2,36 mm	N° 8	2011001	●	26,50 mm	1.06in	2016601
71 µ		2002801	●	2,50 mm		2011201	●	28,00 mm		2016801
75 µ	N° 200	2003001	●	2,80 mm	N° 7	2011401	●	31,50 mm	1 1/4in	2017001
80 µ		2003201	●	3,15 mm		2011601	●	35,50 mm		2017201
90 µ	N° 170	2003401	●	3,35 mm	N° 6	2011801	●	37,50 mm	1 1/2in	2017401
100 µ		2003601	●	3,55 mm		2012001	●	40,00 mm		2017601
106 µ	N° 140	2003801	●	4,00 mm	N° 5	2012201	●	45,00 mm	1 3/4in	2017801
112 µ		2004001	●	4,50 mm		2012401	●	50,00 mm	2.00in	2018001
125 µ	N° 120	2004201	●	4,75 mm	N° 4	2012601	●	53,00 mm	2.12in	2018201
140 µ		2004401	●	5,00 mm		2012801	●	56,00 mm		2018401
150 µ	N° 100	2004601	●	5,60 mm	N° 3½	2013001	●	63,00 mm	2 1/2in	2018601
160 µ		2004801	●	6,30 mm	1/4in	2013201	●	71,00 mm		2018801
180 µ	N° 80	2005001	●	6,70 mm	0.265 in	2013401	●	75,00 mm	3.00in	2019001
200 µ		2005201	●	7,10 mm		2013601	●	80,00 mm		2019201
212 µ	N° 70	2005401	●	8,00 mm	5/16in	2013801	●	90,00 mm	3 1/2in	2019401
224 µ		2005601	●	9,00 mm		2014001	●	100,00 mm	4.00in	2019601
250 µ	N° 60	2005801	●	9,50 mm	3/8in	2014201	●	106,00 mm	4.24in	2019801
280 µ		2006001	●	10,00 mm		2014401	●	112,00 mm		2020001
300 µ	N° 50	2006201	●				●	125,00 mm	5.00in	2020201
315 µ		2006401	●				●			
355 µ	N° 45	2006601	●				●			
400 µ		2006801	●				●			
425 µ	N° 40	2007001	●				●			
450 µ		2007201	●				●			
500 µ	N° 35	2007401	●				●			
560 µ		2007601	●				●			
600 µ	N° 30	2007801	●				●			
630 µ		2008001	●				●			
710 µ	N° 25	2008201	●				●			
800 µ		2008401	●				●			
850 µ	N° 20	2008601	●				●			
900 µ		2008801	●				●			



500

# 500mm Ø x 100mm H

STAINLESS STEEL FRAME



## SIEVES WITH PERFORATED PLATE

### 500.2 Square hole

### 500.3 Round hole

ISO 3310.2	ASTM E-323-2011	Code CISA	ISO 3310.2	ASTM E-323-2011	Code CISA	ISO 3310.2	ASTM E-323-2011	Code CISA	ISO 3310.2	ASTM E-323-2011	Code CISA
4,00 mm	5/32"	2012261	22,40 mm	7/8"	2016261	4,00 mm	5/32"	2012241	22,40 mm	7/8"	2016241
4,50 mm		2012461	25,00 mm	1.00"	2016461	4,50 mm		2012441	25,00 mm	1.00"	2016441
4,75 mm	3/16"	2012661	26,50 mm	1 1/18"	2016661	4,75 mm	3/16"	2012641	26,50 mm	1 1/18"	2016641
5,00 mm		2012861	28,00 mm		2016861	5,00 mm		2012841	28,00 mm		2016841
5,60 mm	7/32"	2013061	31,50 mm	1 ¼"	2017061	5,60 mm	7/32"	2013041	31,50 mm	1 ¼"	2017041
6,30 mm	¼"	2013261	35,50 mm		2017261	6,30 mm	¼"	2013241	35,50 mm		2017241
6,70 mm	17/64"	2013461	37,50 mm	1 ½"	2017461	6,70 mm	17/64"	2013441	37,50 mm	1 ½"	2017441
7,10 mm		2013661	40,00 mm		2017661	7,10 mm		2013641	40,00 mm		2017641
8,00 mm	5/16"	2013861	45,00 mm	1 ¾"	2017861	8,00 mm	5/16"	2013841	45,00 mm	1 ¾"	2017841
9,00 mm		2014061	50,00 mm	2.00"	2018061	9,00 mm		2014041	50,00 mm	2.00"	2018041
9,50 mm	3/8"	2014261	53,00 mm	2 1/8"	2018261	9,50 mm	3/8"	2014241	53,00 mm	2 1/8"	2018241
10,00 mm		2014461	56,00 mm		2018461	10,00 mm		2014441	56,00 mm		2018441
11,20 mm	7/16"	2014661	63,00 mm	2 ½"	2018661	11,20 mm	7/16"	2014641	63,00 mm	2 ½"	2018641
12,50 mm	½"	2014861	71,00 mm		2018861	12,50 mm	½"	2014841	71,00 mm		2018841
13,20 mm	17/32"	2015061	75,00 mm	3.00"	2019061	13,20 mm	17/32"	2015041	75,00 mm	3.00"	2019041
14,00 mm		2015261	80,00 mm		2019261	14,00 mm		2015241	80,00 mm		2019241
16,00 mm	5/8"	2015461	90,00 mm	3 ½"	2019461	16,00 mm	5/8"	2015441	90,00 mm	3 ½"	2019441
18,00 mm		2015661	100,00 mm	4.00"	2019661	18,00 mm		2015641	100,00 mm	4.00"	2019641
19,00 mm	¾"	2015861	106,00 mm	4 ¼"	2019861	19,00 mm	¾"	2015841	106,00 mm	4 ¼"	2019841
20,00 mm		2016061	112,00 mm		2020061	20,00 mm		2016041	112,00 mm		2020041
			125,00 mm	5.00"	2020261				125,00 mm	5.00"	2020241

## ACCESSORIES

Pan and cover  
500 mm. Ø

Wet sieving  
pan and cover 500 mm. Ø

Cleaning kit

Calibration certificate  
with uncertainty value.



NOVETAL SARL

1410, Chemin des Chaberts 83136 Garéoult France

Tel : + 33 (0) 4 94 86 47 09 - Email : [info@novetal.com](mailto:info@novetal.com) - Internet : [www.novetal.com](http://www.novetal.com)

TEST SIEVE

**560mm Ø**  
**100mm H**

STAINLESS  
STEEL FRAME

**560**



**C I S a**   
SIEVING TECHNOLOGIES



560

# 560mm Ø x 100mm H

STAINLESS STEEL FRAME



Request  
Calibration Certificate  
Service sieve



For coarse particles.

Individual laser-engraved identification of each sieve to ensure traceability.

Includes certificate of attestation according to 2.1 EN 10204.

Optional calibration certificate with uncertainty value.

Mirror polishing.

Frame material: AISI-316


Screening surface: 2400 cm<sup>2</sup>.



## AVAILABLE CONFIGURATIONS

1. Sieves with metal mesh according to ISO 3310.1 - ASTM E-11 - NF X11-504
2. Sieves with square and round perforated plate, standards ISO 3310.2 - ASTM E-323.

## INCLUDED

-  Test certificate according to standard 2.1.EN 10204.

## OPTIONS

- Calibration certificate with uncertainty value.
- Placement of reinforcement mesh for openings smaller than 100µ.



560

# 560mm Ø x 100mm H

STAINLESS STEEL FRAME



## 560.1 WIRE MESH SIEVES

ISO 3310.1	ASTM E-11-2013	Code CISA		ISO 3310.1	ASTM E-11-2013	Code CISA		ISO 3310.1	ASTM E-11-2013	Code CISA
20 µ	N° 635	2100601	•	1,00 mm	N° 18	2109001	•	11,20 mm	7/16in	2114601
25 µ	N° 500	2100801	•	1,12 mm		2109201	•	12,50 mm	1/2in	2114801
32 µ	N° 450	2101001	•	1,18 mm	N° 16	2109401	•	13,20 mm	0.530in	2115001
36 µ		2101201	•	1,25 mm		2109601	•	14,00 mm		2115201
38 µ	N° 400	2101401	•	1,40 mm	N° 14	2109801	•	16,00 mm	5/8in	2115401
40 µ		2101601	•	1,60 mm		2110001	•	18,00 mm		2115601
45 µ	N° 325	2101801	•	1,70 mm	N° 12	2110201	•	19,00 mm	3/4in	2115801
50 µ		2102001	•	1,80 mm		2110401	•	20,00 mm		2116001
53 µ	N° 270	2102201	•	2,00 mm	N° 10	2110601	•	22,40 mm	7/8in	2116201
56 µ		2102401	•	2,24 mm		2110801	•	25,00 mm	1.00in	2116401
63 µ	N° 230	2102601	•	2,36 mm	N° 8	2111001	•	26,50 mm	1.06in	2116601
71 µ		2102801	•	2,50 mm		2111201	•	28,00 mm		2116801
75 µ	N° 200	2103001	•	2,80 mm	N° 7	2111401	•	31,50 mm	1 1/4in	2117001
80 µ		2103201	•	3,15 mm		2111601	•	35,50 mm		2117201
90 µ	N° 170	2103401	•	3,35 mm	N° 6	2111801	•	37,50 mm	1 1/2in	2117401
100 µ		2103601	•	3,55 mm		2112001	•	40,00 mm		2117601
106 µ	N° 140	2103801	•	4,00 mm	N° 5	2112201	•	45,00 mm	1 3/4in	2117801
112 µ		2104001	•	4,50 mm		2112401	•	50,00 mm	2.00in	2118001
125 µ	N° 120	2104201	•	4,75 mm	N° 4	2112601	•	53,00 mm	2.12in	2118201
140 µ		2104401	•	5,00 mm		2112801	•	56,00 mm		2118401
150 µ	N° 100	2104601	•	5,60 mm	N° 3½	2113001	•	63,00 mm	2 1/2in	2118601
160 µ		2104801	•	6,30 mm	1/4in	2113201	•	71,00 mm		2118801
180 µ	N° 80	2105001	•	6,70 mm	0.265 in	2113401	•	75,00 mm	3.00in	2119001
200 µ		2105201	•	7,10 mm		2113601	•	80,00 mm		2119201
212 µ	N° 70	2105401	•	8,00 mm	5/16in	2113801	•	90,00 mm	3 1/2in	2119401
224 µ		2105601	•	9,00 mm		2114001	•	100,00 mm	4.00in	2119601
250 µ	N° 60	2105801	•	9,50 mm	3/8in	2114201	•	106,00 mm	4.24in	2119801
280 µ		2106001	•	10,00 mm		2114401	•	112,00 mm		2120001
300 µ	N° 50	2106201	•				•	125,00 mm	5.00in	2120201
315 µ		2106401	•							
355 µ	N° 45	2106601	•							
400 µ		2106801	•							
425 µ	N° 40	2107001	•							
450 µ		2107201	•							
500 µ	N° 35	2107401	•							
560 µ		2107601	•							
600 µ	N° 30	2107801	•							
630 µ		2108001	•							
710 µ	N° 25	2108201	•							
800 µ		2108401	•							
850 µ	N° 20	2108601	•							
900 µ		2108801	•							

**560**

# 560mm Ø x 100mm H

STAINLESS STEEL FRAME



## SIEVES WITH PERFORATED PLATE

### 560.2 Square hole

### 560.3 Round hole

ISO 3310.2	ASTM E-323-2011	Code CISA	ISO 3310.2	ASTM E-323-2011	Code CISA	ISO 3310.2	ASTM E-323-2011	Code CISA	ISO 3310.2	ASTM E-323-2011	Code CISA
4,00 mm	5/32"	2112261	22,40 mm	7/8"	2116261	4,00 mm	5/32"	2112241	22,40 mm	7/8"	2116241
4,50 mm		2112461	25,00 mm	1.00"	2116461	4,50 mm		2112441	25,00 mm	1.00"	2116441
4,75 mm	3/16"	2112661	26,50 mm	1 1/18"	2116661	4,75 mm	3/16"	2112641	26,50 mm	1 1/18"	2116641
5,00 mm		2112861	28,00 mm		2116861	5,00 mm		2112841	28,00 mm		2116841
5,60 mm	7/32"	2113061	31,50 mm	1 ¼"	2117061	5,60 mm	7/32"	2113041	31,50 mm	1 ¼"	2117041
6,30 mm	¼"	2113261	35,50 mm		2117261	6,30 mm	¼"	2113241	35,50 mm		2117241
6,70 mm	17/64"	2113461	37,50 mm	1 ½"	2117461	6,70 mm	17/64"	2113441	37,50 mm	1 ½"	2117441
7,10 mm		2113661	40,00 mm		2117661	7,10 mm		2113641	40,00 mm		2117641
8,00 mm	5/16"	2113861	45,00 mm	1 ¾"	2117861	8,00 mm	5/16"	2113841	45,00 mm	1 ¾"	2117841
9,00 mm		2114061	50,00 mm	2.00"	2118061	9,00 mm		2114041	50,00 mm	2.00"	2118041
9,50 mm	3/8"	2114261	53,00 mm	2 1/8"	2118261	9,50 mm	3/8"	2114241	53,00 mm	2 1/8"	2118241
10,00 mm		2114461	56,00 mm		2118461	10,00 mm		2114441	56,00 mm		2118441
11,20 mm	7/16"	2114661	63,00 mm	2 ½"	2118661	11,20 mm	7/16"	2114641	63,00 mm	2 ½"	2118641
12,50 mm	½"	2114861	71,00 mm		2118861	12,50 mm	½"	2114841	71,00 mm		2118841
13,20 mm	17/32"	2115061	75,00 mm	3.00"	2119061	13,20 mm	17/32"	2115041	75,00 mm	3.00"	2119041
14,00 mm		2115261	80,00 mm		2119261	14,00 mm		2115241	80,00 mm		2119241
16,00 mm	5/8"	2115461	90,00 mm	3 ½"	2119461	16,00 mm	5/8"	2115441	90,00 mm	3 ½"	2119441
18,00 mm		2115661	100,00 mm	4.00"	2119661	18,00 mm		2115641	100,00 mm	4.00"	2119641
19,00 mm	¾"	2115861	106,00 mm	4 ¼"	2119861	19,00 mm	¾"	2115841	106,00 mm	4 ¼"	2119841
20,00 mm		2116061	112,00 mm		2120061	20,00 mm		2116041	112,00 mm		2120041
			125,00 mm	5.00"	2120261				125,00 mm	5.00"	2120241

## ACCESSORIES

Cleaning kit

Anti-clogging balls

Rubber gasket  
560 mm. Ø

Calibration certificate  
with uncertainty value.



TEST SIEVE

**600mm Ø**  
**100mm H**

STAINLESS  
STEEL FRAME

**600**



**C I S a**   
SIEVING TECHNOLOGIES





600

# 600mm Ø x 100mm H

STAINLESS STEEL FRAME



Request  
Calibration Certificate  
Service sieve



For coarse particles.

Individual laser-engraved identification of each sieve to ensure traceability.

Includes certificate of attestation according to 2.1 EN 10204.

Optional calibration certificate with uncertainty value.

Mirror polishing.

Frame material: AISI-316


Screening surface: 2800 cm<sup>2</sup>.



## AVAILABLE CONFIGURATIONS

1. Sieves with metal mesh according to ISO 3310.1 - ASTM E-11 - NF X11-504
2. Sieves with square and round perforated plate, standards ISO 3310.2 - ASTM E-323.

## INCLUDED

-  Test certificate according to standard 2.1.EN 10204.

## OPTIONS

- Calibration certificate with uncertainty value.
- Placement of reinforcement mesh for openings smaller than 100µ.

600

# 600mm Ø x 100mm H

STAINLESS STEEL FRAME



## 600.1 WIRE MESH SIEVES

ISO 3310.1	ASTM E-11-2013	Code CISA		ISO 3310.1	ASTM E-11-2013	Code CISA		ISO 3310.1	ASTM E-11-2013	Code CISA
20 µ	N° 635	2100601	•	1,00 mm	N° 18	2109001	•	11,20 mm	7/16in	2114601
25 µ	N° 500	2100801	•	1,12 mm		2109201	•	12,50 mm	1/2in	2114801
32 µ	N° 450	2101001	•	1,18 mm	N° 16	2109401	•	13,20 mm	0.530in	2115001
36 µ		2101201	•	1,25 mm		2109601	•	14,00 mm		2115201
38 µ	N° 400	2101401	•	1,40 mm	N° 14	2109801	•	16,00 mm	5/8in	2115401
40 µ		2101601	•	1,60 mm		2110001	•	18,00 mm		2115601
45 µ	N° 325	2101801	•	1,70 mm	N° 12	2110201	•	19,00 mm	3/4in	2115801
50 µ		2102001	•	1,80 mm		2110401	•	20,00 mm		2116001
53 µ	N° 270	2102201	•	2,00 mm	N° 10	2110601	•	22,40 mm	7/8in	2116201
56 µ		2102401	•	2,24 mm		2110801	•	25,00 mm	1.00in	2116401
63 µ	N° 230	2102601	•	2,36 mm	N° 8	2111001	•	26,50 mm	1.06in	2116601
71 µ		2102801	•	2,50 mm		2111201	•	28,00 mm		2116801
75 µ	N° 200	2103001	•	2,80 mm	N° 7	2111401	•	31,50 mm	1 1/4in	2117001
80 µ		2103201	•	3,15 mm		2111601	•	35,50 mm		2117201
90 µ	N° 170	2103401	•	3,35 mm	N° 6	2111801	•	37,50 mm	1 1/2in	2117401
100 µ		2103601	•	3,55 mm		2112001	•	40,00 mm		2117601
106 µ	N° 140	2103801	•	4,00 mm	N° 5	2112201	•	45,00 mm	1 3/4in	2117801
112 µ		2104001	•	4,50 mm		2112401	•	50,00 mm	2.00in	2118001
125 µ	N° 120	2104201	•	4,75 mm	N° 4	2112601	•	53,00 mm	2.12in	2118201
140 µ		2104401	•	5,00 mm		2112801	•	56,00 mm		2118401
150 µ	N° 100	2104601	•	5,60 mm	N° 3½	2113001	•	63,00 mm	2 1/2in	2118601
160 µ		2104801	•	6,30 mm	1/4in	2113201	•	71,00 mm		2118801
180 µ	N° 80	2105001	•	6,70 mm	0.265 in	2113401	•	75,00 mm	3.00in	2119001
200 µ		2105201	•	7,10 mm		2113601	•	80,00 mm		2119201
212 µ	N° 70	2105401	•	8,00 mm	5/16in	2113801	•	90,00 mm	3 1/2in	2119401
224 µ		2105601	•	9,00 mm		2114001	•	100,00 mm	4.00in	2119601
250 µ	N° 60	2105801	•	9,50 mm	3/8in	2114201	•	106,00 mm	4.24in	2119801
280 µ		2106001	•	10,00 mm		2114401	•	112,00 mm		2120001
300 µ	N° 50	2106201	•				•	125,00 mm	5.00in	2120201
315 µ		2106401	•				•			
355 µ	N° 45	2106601	•				•			
400 µ		2106801	•				•			
425 µ	N° 40	2107001	•				•			
450 µ		2107201	•				•			
500 µ	N° 35	2107401	•				•			
560 µ		2107601	•				•			
600 µ	N° 30	2107801	•				•			
630 µ		2108001	•				•			
710 µ	N° 25	2108201	•				•			
800 µ		2108401	•				•			
850 µ	N° 20	2108601	•				•			
900 µ		2108801	•				•			

600

# 600mm Ø x 100mm H

STAINLESS STEEL FRAME



## SIEVES WITH PERFORATED PLATE

### 600.2 Square hole

### 600.3 Round hole

ISO 3310.2	ASTM E-323-2011	Code CISA	ISO 3310.2	ASTM E-323-2011	Code CISA	ISO 3310.2	ASTM E-323-2011	Code CISA	ISO 3310.2	ASTM E-323-2011	Code CISA
4,00 mm	5/32"	2112261	22,40 mm	7/8"	2116261	4,00 mm	5/32"	2112241	22,40 mm	7/8"	2116241
4,50 mm		2112461	25,00 mm	1.00"	2116461	4,50 mm		2112441	25,00 mm	1.00"	2116441
4,75 mm	3/16"	2112661	26,50 mm	1 1/18"	2116661	4,75 mm	3/16"	2112641	26,50 mm	1 1/18"	2116641
5,00 mm		2112861	28,00 mm		2116861	5,00 mm		2112841	28,00 mm		2116841
5,60 mm	7/32"	2113061	31,50 mm	1 ¼"	2117061	5,60 mm	7/32"	2113041	31,50 mm	1 ¼"	2117041
6,30 mm	¼"	2113261	35,50 mm		2117261	6,30 mm	¼"	2113241	35,50 mm		2117241
6,70 mm	17/64"	2113461	37,50 mm	1 ½"	2117461	6,70 mm	17/64"	2113441	37,50 mm	1 ½"	2117441
7,10 mm		2113661	40,00 mm		2117661	7,10 mm		2113641	40,00 mm		2117641
8,00 mm	5/16"	2113861	45,00 mm	1 ¾"	2117861	8,00 mm	5/16"	2113841	45,00 mm	1 ¾"	2117841
9,00 mm		2114061	50,00 mm	2.00"	2118061	9,00 mm		2114041	50,00 mm	2.00"	2118041
9,50 mm	3/8"	2114261	53,00 mm	2 1/8"	2118261	9,50 mm	3/8"	2114241	53,00 mm	2 1/8"	2118241
10,00 mm		2114461	56,00 mm		2118461	10,00 mm		2114441	56,00 mm		2118441
11,20 mm	7/16"	2114661	63,00 mm	2 ½"	2118661	11,20 mm	7/16"	2114641	63,00 mm	2 ½"	2118641
12,50 mm	½"	2114861	71,00 mm		2118861	12,50 mm	½"	2114841	71,00 mm		2118841
13,20 mm	17/32"	2115061	75,00 mm	3.00"	2119061	13,20 mm	17/32"	2115041	75,00 mm	3.00"	2119041
14,00 mm		2115261	80,00 mm		2119261	14,00 mm		2115241	80,00 mm		2119241
16,00 mm	5/8"	2115461	90,00 mm	3 ½"	2119461	16,00 mm	5/8"	2115441	90,00 mm	3 ½"	2119441
18,00 mm		2115661	100,00 mm	4.00"	2119661	18,00 mm		2115641	100,00 mm	4.00"	2119641
19,00 mm	¾"	2115861	106,00 mm	4 ¼"	2119861	19,00 mm	¾"	2115841	106,00 mm	4 ¼"	2119841
20,00 mm		2116061	112,00 mm		2120061	20,00 mm		2116041	112,00 mm		2120041
			125,00 mm	5.00"	2120261				125,00 mm	5.00"	2120241

## ACCESSORIES

Cleaning kit

Anti-clogging balls

Rubber gasket  
600 mm. Ø

Calibration certificate  
with uncertainty value.



NOVETAL SARL

1410, Chemin des Chaberts 83136 Garéoult France

Tel : + 33 (0) 4 94 86 47 09 - Email : [info@novetal.com](mailto:info@novetal.com) - Internet : [www.novetal.com](http://www.novetal.com)